

Museo Geominero

Instituto Geológico y Minero de España



The aims of the Museo Geominero (Geominering Museum) are to research, conserve and display the geological, paleontological and mineralogical heritage through its important collections from the different regions of Spain and former Spanish colonies, and from other significant sources worldwide. A visit to the Museum reveals the geological evolution of planet Earth over time, through the wide-ranging collection of minerals, rocks and fossils on display.

The origin of this geological and mining museum was the work of the Commission for the Geological Map of Spain, created by Queen Isabel II in 1849. During the early years of the Commission's activities the collection was dispersed in different venues, but it was finally brought together in 1927 in the present day museum, a magnificent building which in itself is well worth a visit.

The Museum contains mineral and fossil resources representing the geology of Spain, with significant examples of rocks and minerals from former Spanish colonies including Philippines, Cuba and the Western Sahara, and items from other parts of the world. Visitors to the Museum can make an extraordinary journey through time thanks to the wide-ranging collection of over 16,000 mineral samples, 1,000 rock samples and some 55,000 macrofossils. Around 18,000 of these items, representing approximately 25% of the collections, are on permanent display.



Ríos Rosas, 23 – 28003 Madrid
 Exhibition room and bookings: Tel.: 913.495.759
 Museum secretary: Tel. 913.495.959
 Fax: 913.495.828
 m.geominero@igme.es
 www.igme.es/museo

ACCESS

Bus: Nºs 3, 5, 12, 37, 45, 149 and Circular
 Metro: Line 1 (Ríos Rosas)
 Line 7 (Alonso Cano)

OPENING TIMES

Monday – Sunday 9.00 – 14.00.
 The Museum is closed on December
 24, 25 and 31 and January 1 and 6.

FREE ADMISSION

Follow us on



Museo Geominero 
 Instituto Geológico y Minero de España

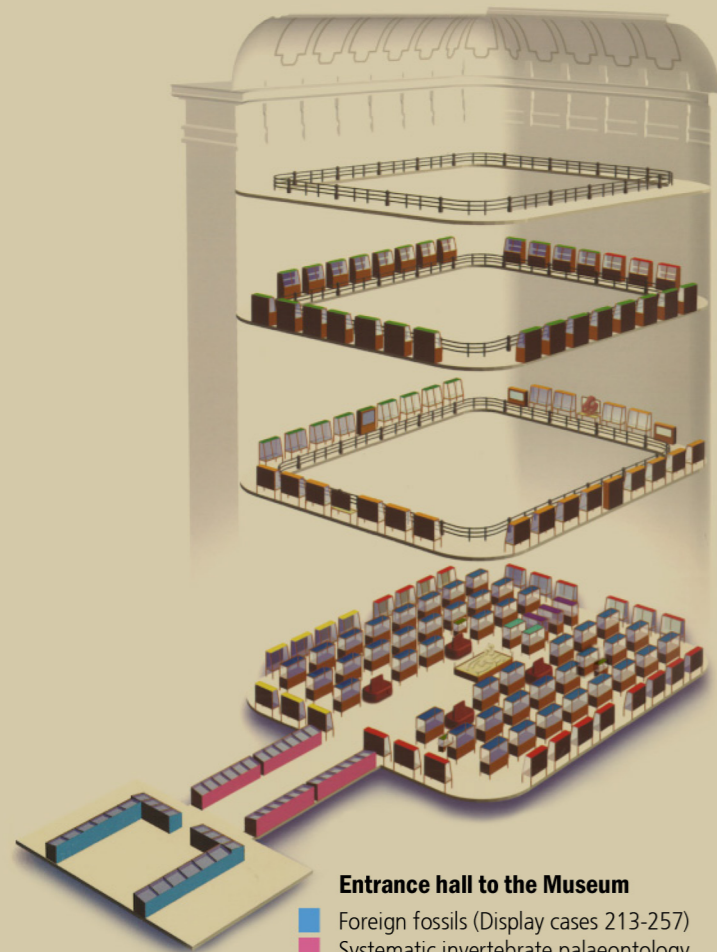


GOBIERNO
DE ESPAÑA

MINISTERIO
DE ECONOMÍA, INDUSTRIA
Y COMPETITIVIDAD

Instituto Geológico
y Minero de España





Entrance hall to the Museum

- Foreign fossils (Display cases 213-257)
- Systematic invertebrate palaeontology (Cases 224-245)

Level 0

- Mineral systematics (Cases 1-21)
- Mineral resources (Cases 22-28)
- Spanish fossil flora and invertebrates (Cases 29-72)
- Special specimens (Cases 73-75)
- Special rocks (Cases 268, 269, 270, 285)
- Gems (Cases 283-284)

Level 1

- Fossil vertebrates (Cases 83-110)
- Monographic display cases (99-106)

Level 2

- Rocks (Cases 139-141)
- Minerals from the Autonomous Communities and Cities (Cases 112-138)

Level 3

- Other collections (No visitor access)



Quartz (amethyst). Systematic mineral collection. Display case 19



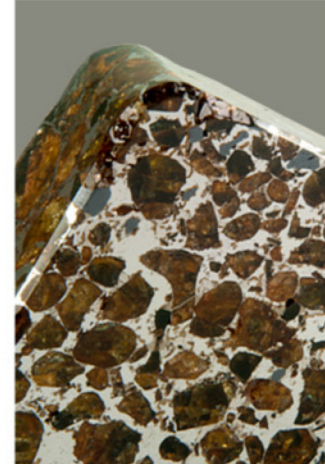
Prionocheilus mendax. Middle Ordovician. Systematic invertebrate palaeontology collection. Display case 229



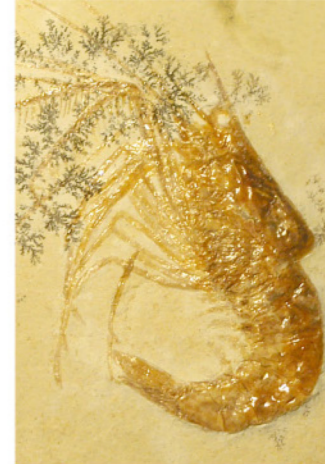
Blue beryl (aquamarine). Gem collection. Display case 283



Quenstedticeras sp. Upper Jurassic. Foreign fossil collection. Display case 74



Pallasite (meteorite). Special rock collection. Display case 269



Antrimpos sp. Upper Jurassic. Systematic invertebrate palaeontology collection. Display case 228

THE BUILDING

The Museum is housed on the first floor of the Geological and Mining Institute of Spain (IGME). The building was completed in 1925 and in 1998 it was listed as a protected building of special interest. In this imposing building the use of wood, wrought iron and stained glass all contribute to its unique atmosphere. The impressive entrance stairway in white Macael marble is complemented by magnificent stained glass panels.

The central hall of the Museum is a soaring glass-roofed atrium where the collections are distributed between the main floor and the three tiers of balconies bordering it. The polychrome stained glass semi-vaulted ceiling was done by the re-

nowned Maumejean atelier. The central motif is a large royal coat of arms with four allegorical arms of the Corps of Mining Engineers, flanked by the sixteen coats of arms of the provincial mining authorities existing at the time when the building was completed.

THE COLLECTIONS

The Museum contains a detailed collection representing the mineral and fossil resources from all the geological areas in Spain and from other important international sites. The collections are exhibited in more than 250 carved wood and glass display cases which can be viewed in the central hall and access areas. The permanent exhibition includes the following collections:

-Systematic mineral collection including mineral species arranged by crystal chemical criteria.

-Mineral resources collection presenting a selection of substances of mining interest.

-Mineral collection from Spain's Autonomous Communities and Cities containing a wide selection of specimens from important Spanish sites, collected from both historic and currently active mines.

-Gem collection with 159 specimens including ruby, sapphire, emerald and aquamarine, as well as replicas of 14 famous diamonds.

-Basic rock collection, mainly intended for teaching and learning activities, this includes the most common lithosphere rocks.

-Special rock collection, representing a heterogeneous group including meteorites, impactites and natural vitreous rocks.

-Systematic invertebrate palaeontology collection, introducing the main fossil invertebrate groups from an evolutionary viewpoint, highlighting their general morphological characteristics.

-Fossil flora and invertebrate collection, illustrating the rich Spanish palaeontology arranged chronostratigraphically to provide an approximate overview of the palaeobiological diversity in Spain between the Upper Proterozoic and the Pliocene.

-Fossil invertebrate collection, arranged by evolution from fish to fossil remains of humans and primitive industries.

-Foreign fossil collection, of fundamental historical interest, which brings together materials from various classical or formerly existing sites.

VISITS

Admission to the Museum is free. Facilities are available for visitors with reduced mobility. The dates and times of group visits must be booked in advance by telephone.

Full information on the Museum's activities are available in the sections Programas Educativos (Educational Programs) and Divulgación y Didáctica (Dissemination and Teaching) on the Museum website (www.igme.es/museo) which detail the educational resources avail-

able (workshops, learning guides, student worksheets, audiovisuals in the Gea series, information sheet, etc.).

The Museum offers guided tours for groups (Monday-Friday) to explain the content of the collections. The Guides form part of the *Programa Voluntarios Culturales Mayores para enseñar los Museos y Catedrales de España* (Senior Volunteer Cultural Guides for the Museums and Cathedrals of Spain), organized by the Confederación de Aulas de la Tercera Edad (Seniors Classroom Confederation). This service is only available for groups and should be requested when booking the visit.