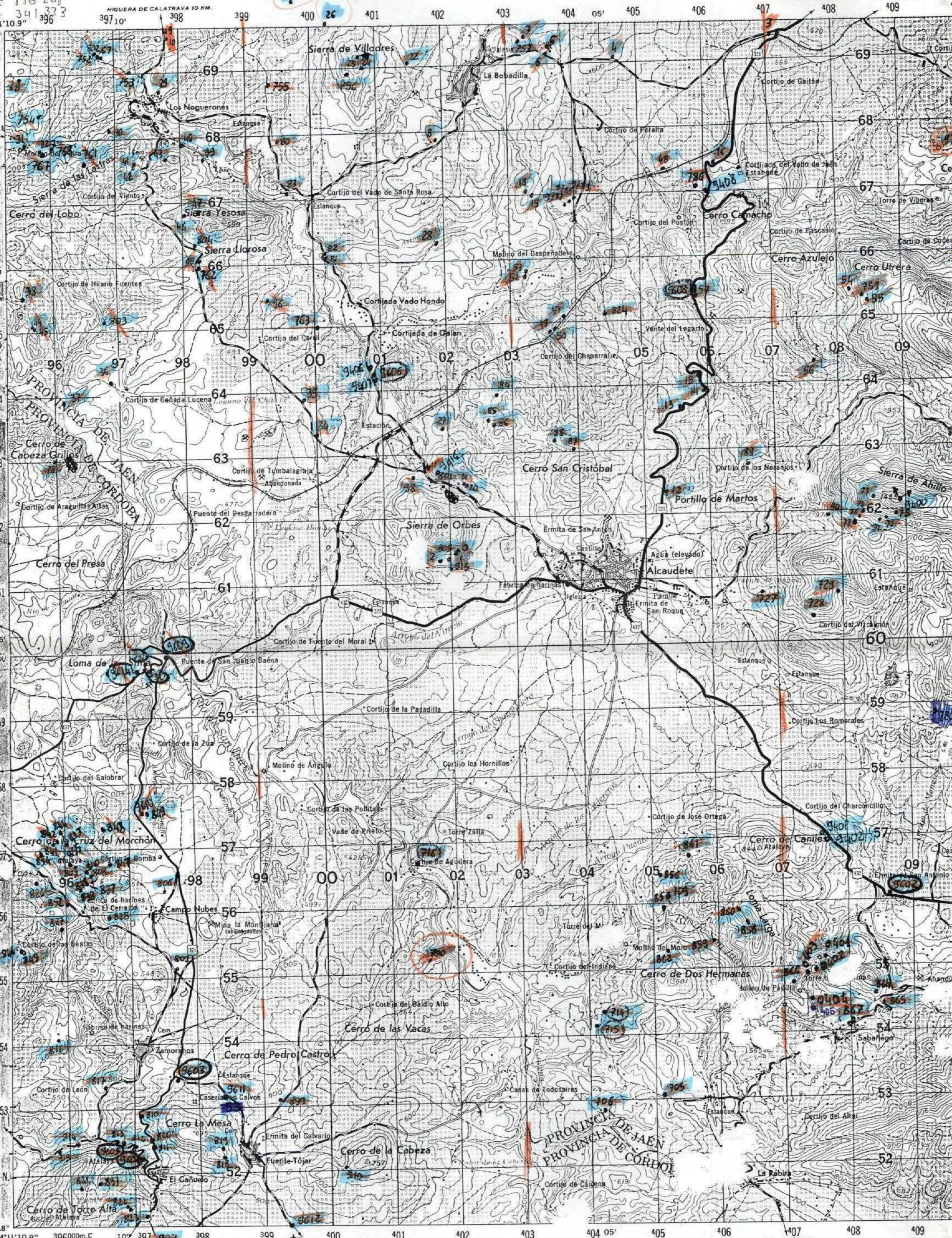


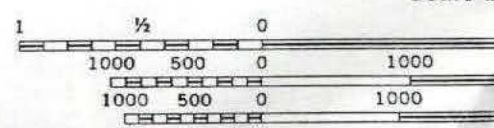
TS6 268
341 373
11'10.9"



4°11'10.9" 396000m E 107° 39' 39.3" 398 399 400 401 402 403 404 05' 405 406 407 408 409
PRIEGO DE CORDOBA 8.3 KM.
CARCABUEY 17 KM.
CASTIL DE LOS MUPOS 2.6 KM.
SAN JOSE 1 KM.

M781, EDITION 3-AMS

Prepared by the Army Map Service (HYIAM), Corps of Engineers, U.S. Army, Washington, D.C. Compiled in 1955 by photogrammetric methods from aerial photography dated Jan., Feb., June 1946. Planimetric detail revised by photo-planimetric methods by AMS, 1963. Map field edited by Consejo Superior Geográfico, 1964.



Scale 1

2 58 0d
230 52 17



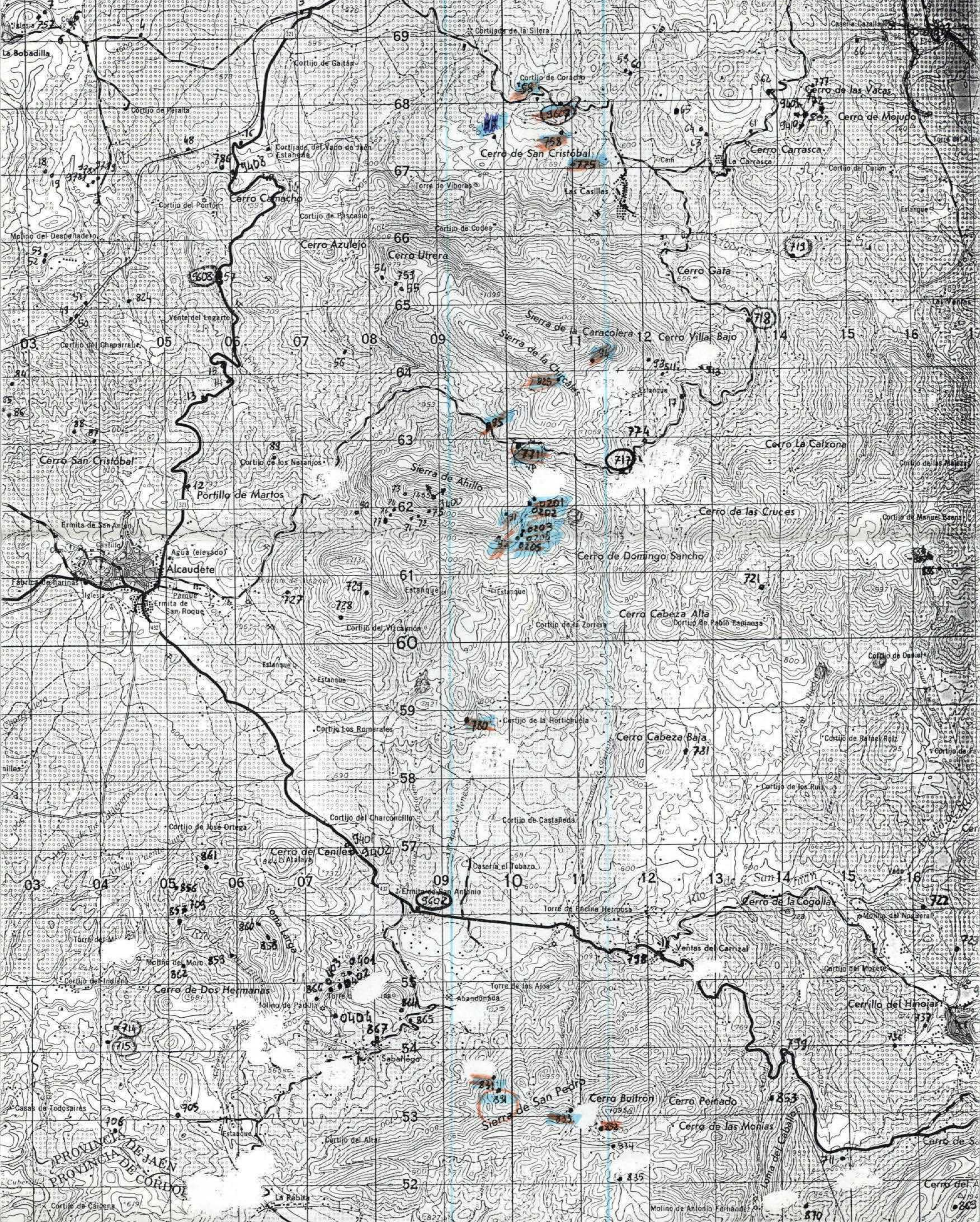
ALCAUDETE

TORREDONJIMENO 16 KM.
MARTOS 10 KM.
MARTOS 13 KM.

MARTOS 7.5 KM.

MARTOS 8.8 KM.

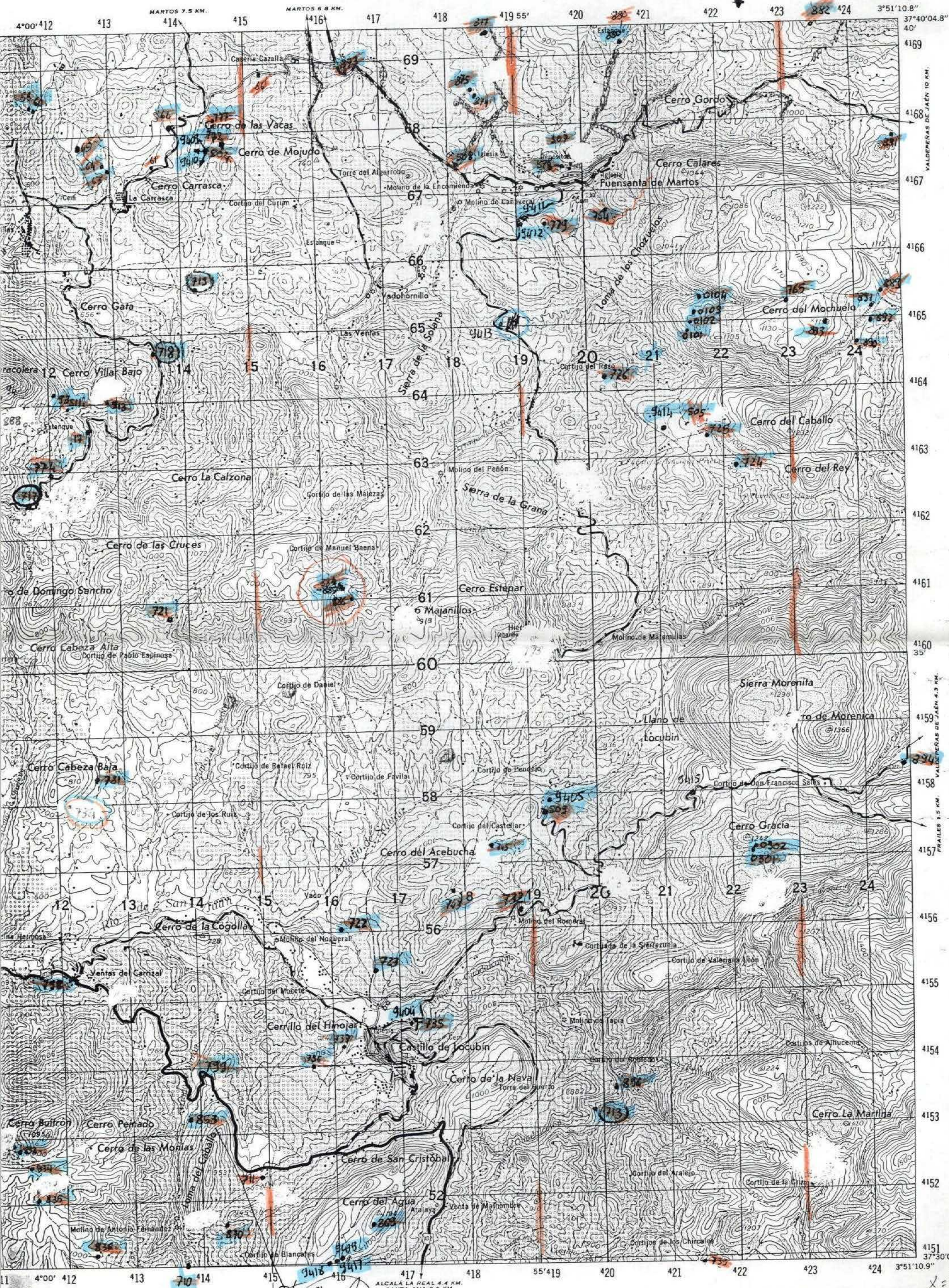
403 404 05' 405 406 407 408 409 410 411 4°00'412 413 414 415 416 417



PROVINCIA DE JAÉN
PROVINCIA DE CORDOBA

Molino de Antonio Fernández
Cerro del A
803

X = 587668
Y = 391224



VALDEPERAS DE JAÉN 10 KM.
VALDEPERAS DE JAÉN 4.3 KM.
TRAILES 1.5 KM.

X = 587668
Y = 391224