

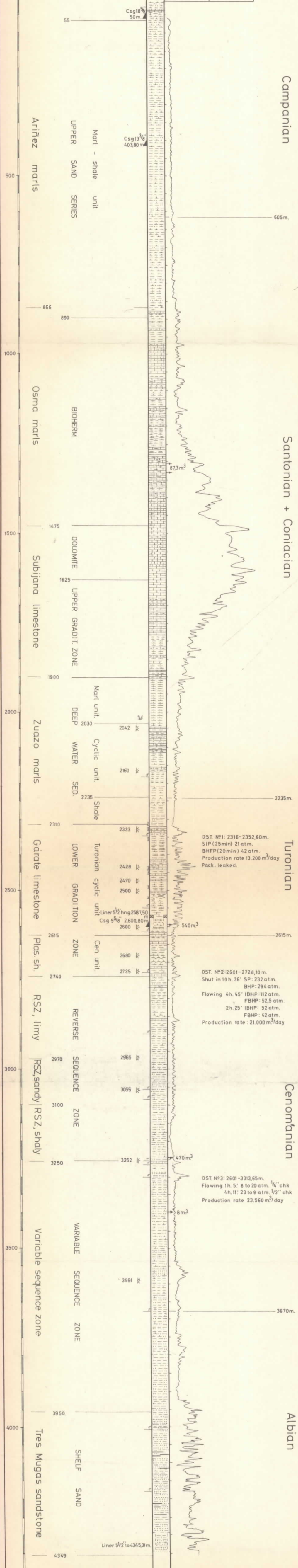
CASTILLO - 1

1/11/1959 - 6/10/1960

42° 48' 04" N

1° 00' 56" E

655,30m.a.s.l.



Total Depth 4.349 m.

4,7m. intervals perforated with 61 shots, 4shots/foot (except 2520-2290m. with 37 shots) 2 7/8" shaped charge. AT after shooting with 10,4m³ of CIH, 15 1/4", Pck at 2.277,65m.

Scale 1: 5000