

MAPA GEOLÓGICO
Escala 1:25.000

Instituto Geológico
y Minero de España

GOBIERNO
de CANTABRIA
CONSEJERÍA DE PRESIDENCIA Y JUSTICIA

REINOSA

83-III
35-12

LEYENDA

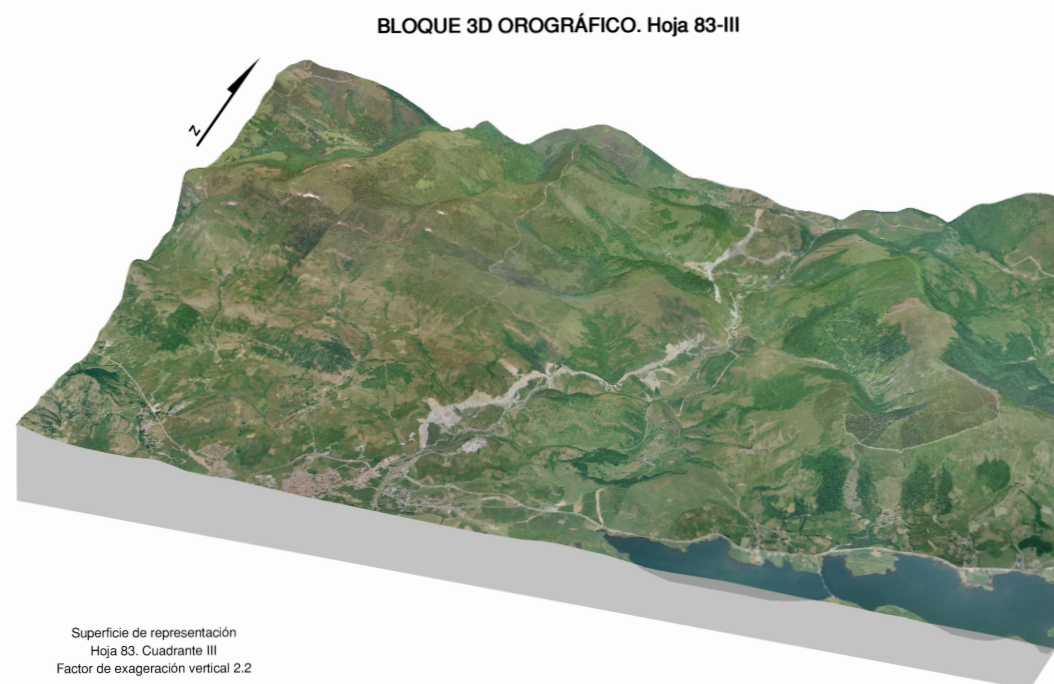
Table of geological units categorized by Quaternario (Holoceno, Superior, Medio, Inferior), Cretácico Inferior (Burdigalense, Albense), Jurásico (Lias, Superior, Medio, Inferior), and Triásico (Superior, Medio, Inferior). Includes lithological descriptions for each unit.

SIGNOS CONVENCIONALES

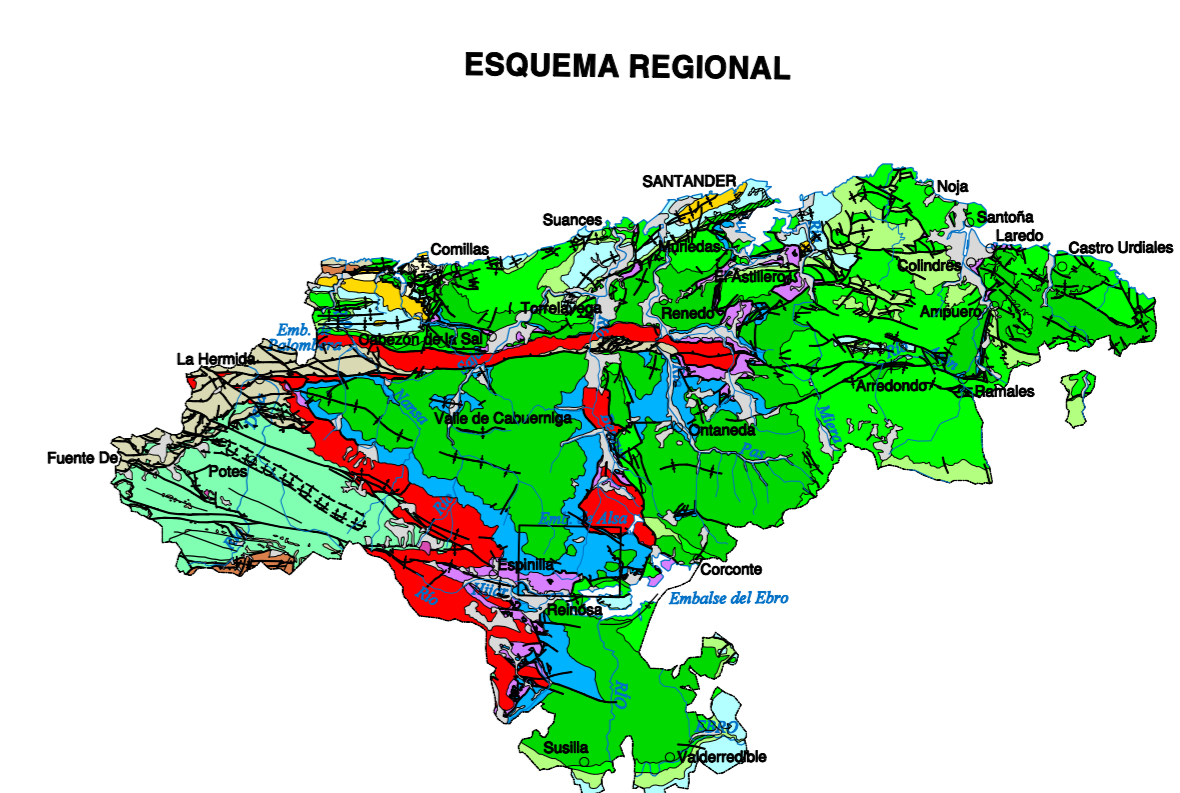
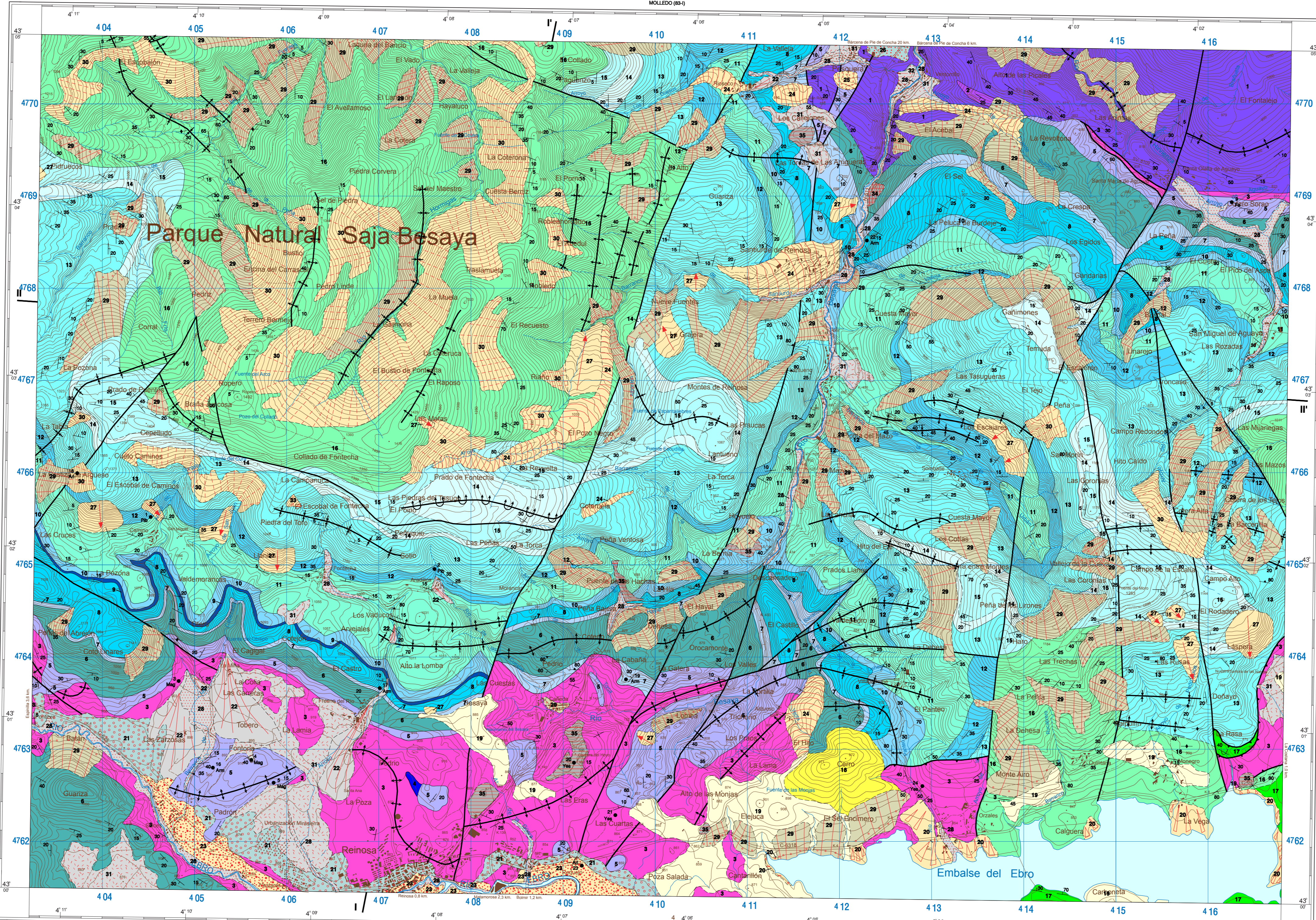
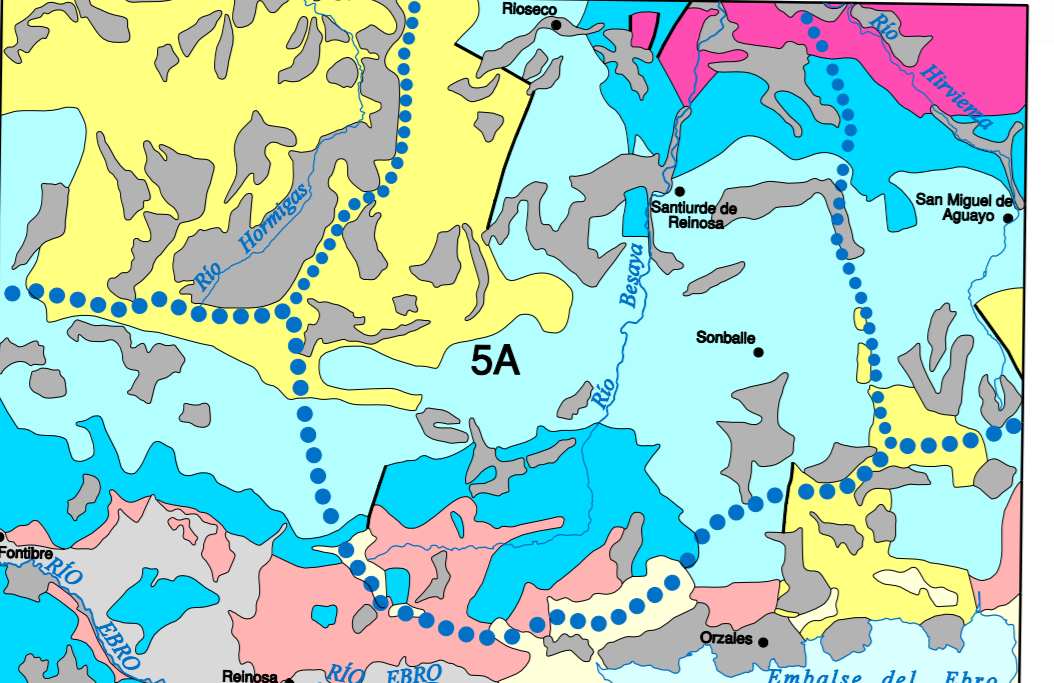
Table of conventional signs including contour lines, faults, roads, rivers, and various geological features like faults and folds.

ESQUEMA HIDROGEOLOGICO

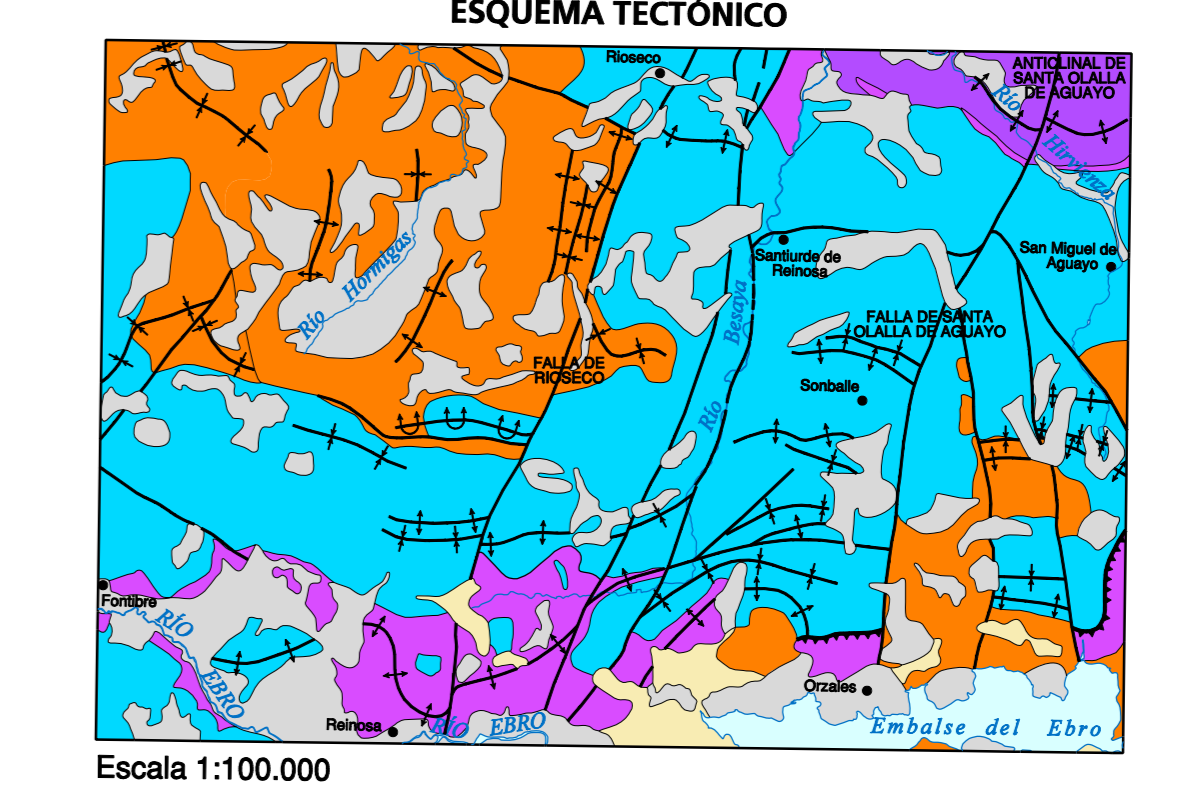
Unidad hidrogeológica: Símbolo de Culebrilla
División de Cuenca hidrográfica principal
División de Cuenca hidrográfica secundaria



ESQUEMA HIDROGEOLOGICO



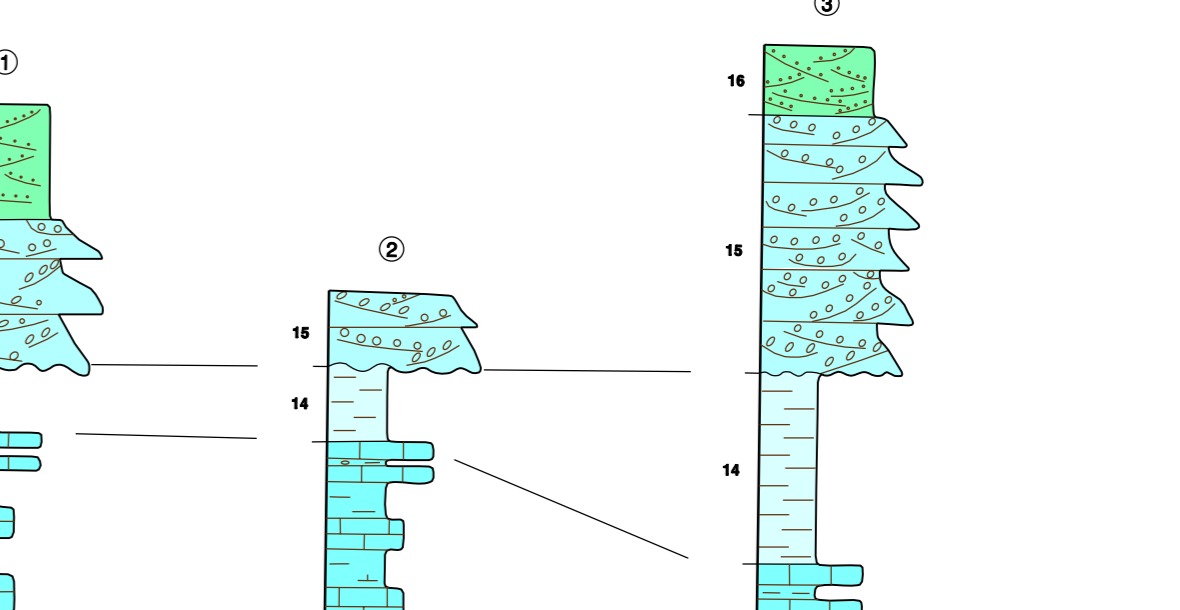
Legend for the Regional Geological Scheme (ESQUEMA REGIONAL) showing different geological units and their colors.



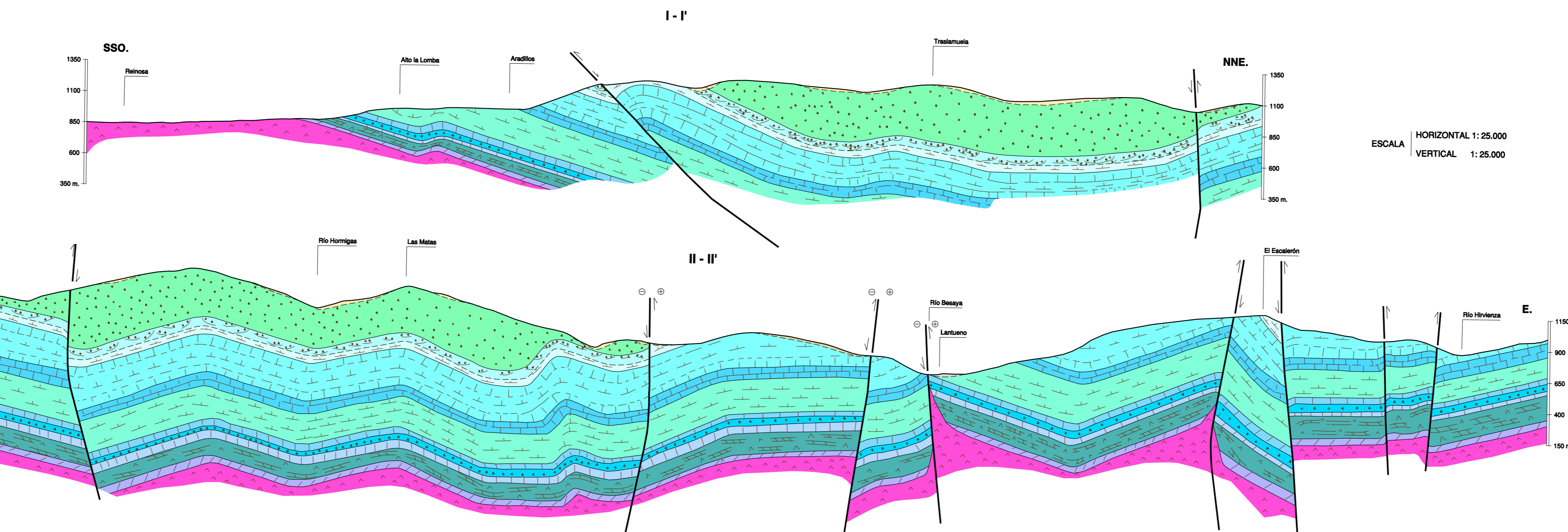
ESQUEMA TECTÓNICO

ESCALA 1:100.000

Legends for tectonic units and zones, including 'Columbas Estratigráficas de las Principales Unidades o Zonas'.



CORTES GEOLÓGICOS



NORMAS, DIRECCIÓN Y SUPERVISIÓN DEL I.G.M.E.
REALIZACIÓN DE LA CARTOGRAFÍA GEOLÓGICA 2008

Table of coordinates for the four series of columns.

Table with columns 'SERIES', 'X', and 'Y' listing coordinates for Series 1, 2, 3, and 4.