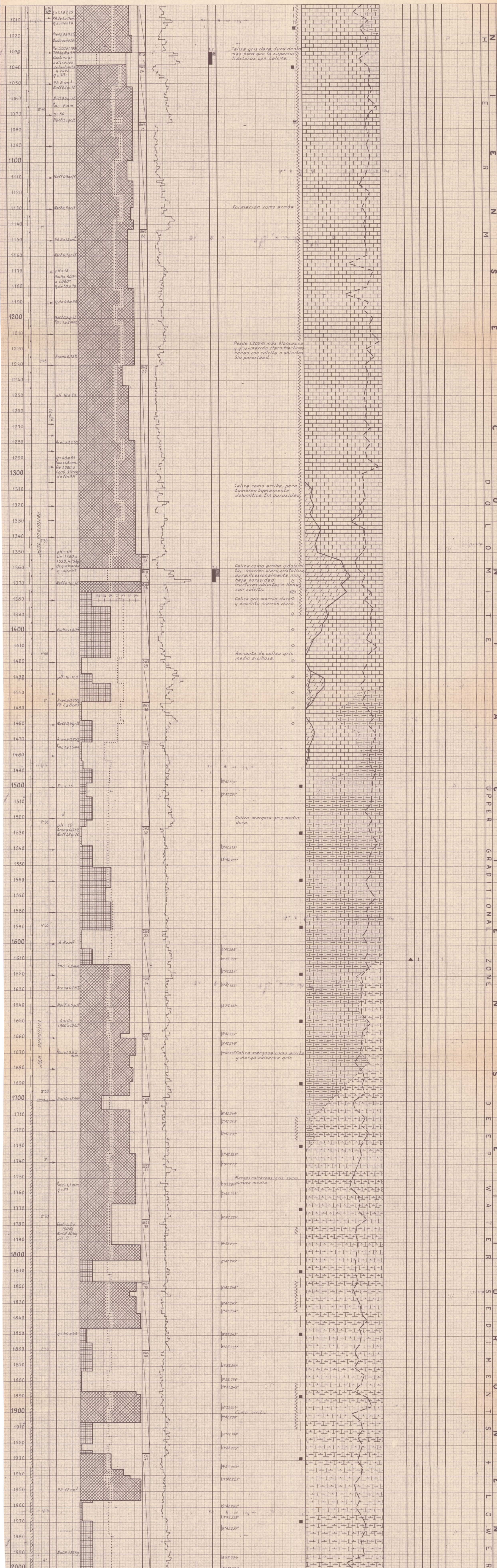


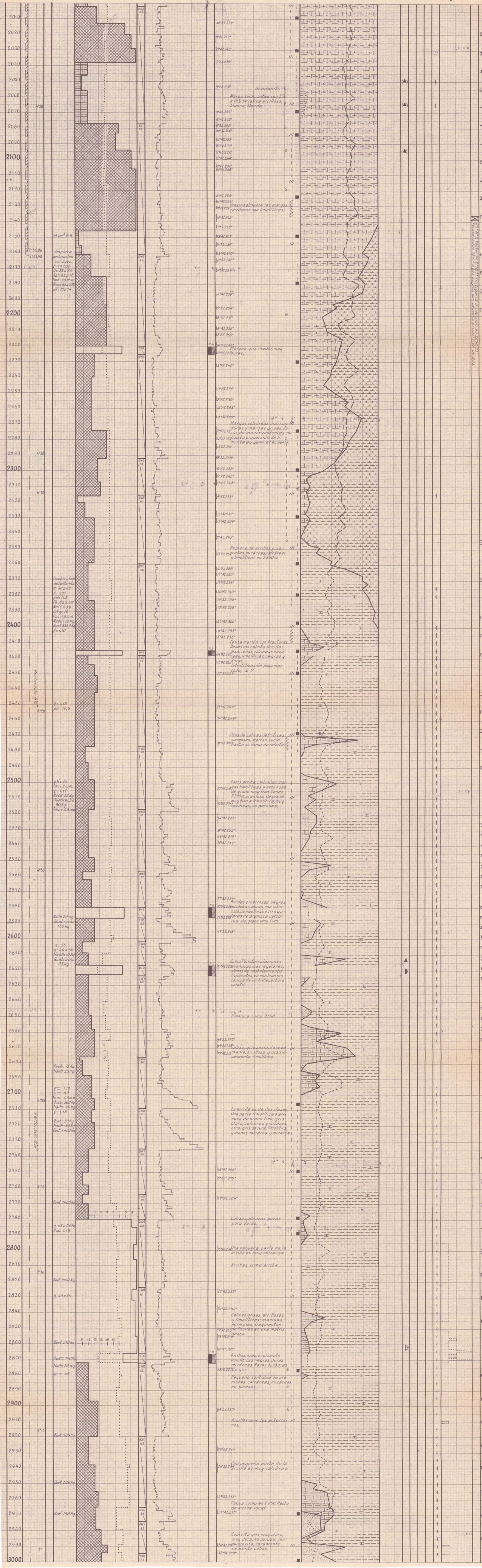


Corres-1 20139 de 1000 a 2000 m.

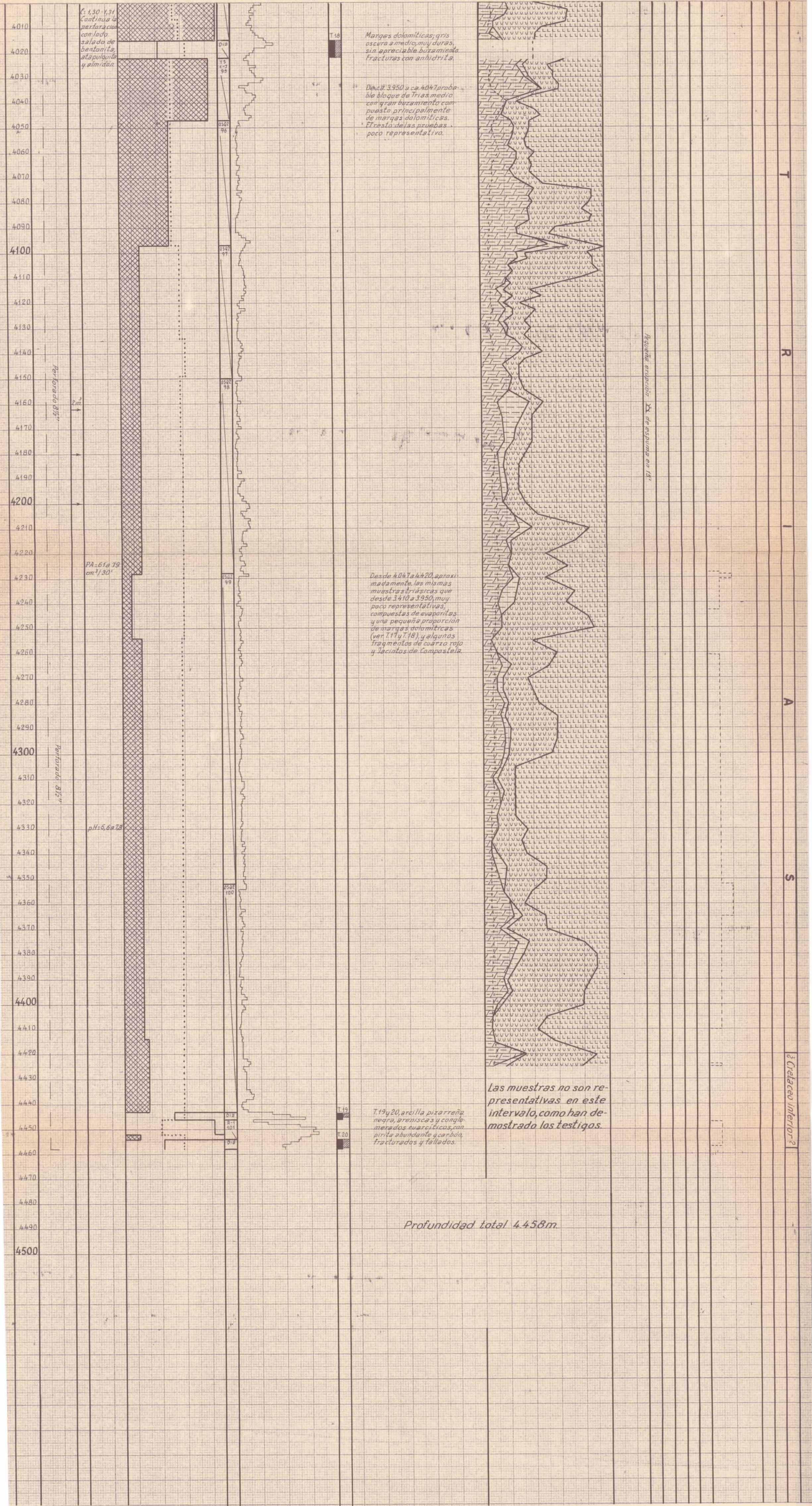


N I E R M S E C D O L O M I T E A C U P P E R G R A D I T I O N A L Z O N E S D E E P W A T E R S E D I M E N T S + L O W E R

S G R A D I T I O N A L Z O N E E M I X S E D I M E N T A S R E V E R S E S E Q U E N C E Z O N E S V A R I A B L E S E Q U E N C E











*Sonic Log*

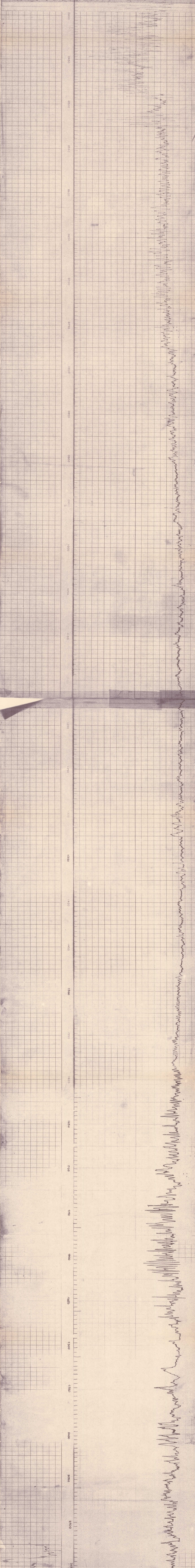
COMPANY \_\_\_\_\_  
 WELL \_\_\_\_\_  
 FIELD \_\_\_\_\_  
 LOCATION \_\_\_\_\_  
 COUNTRY \_\_\_\_\_  
 STATE \_\_\_\_\_  
 Elevation K.B. \_\_\_\_\_  
 D.F. \_\_\_\_\_  
 or C.L. \_\_\_\_\_

Log Depth Measured From \_\_\_\_\_ Ft. Above \_\_\_\_\_

Run No.	1
Down Reading	261.12 (60)
Up Reading	34.30
Foot Pressure	177.80
Cap. Suction	3.81
Depth Reached	
Bottom Driller	James D. ...
Mud Nat.	
Dens. Visc.	1.44 @ 45 °F
Fluid Resist.	5.47 @ 53 °F
Resist. BHT	9 @ 53 °F
pH	9 @ 53 °F
Wtr. Loss	11.6 CC 30 min
Km	12.1/4
Bit Size	3 1/8
Spacing	10
Our Rig Time	13:30
Track No.	1121
Recorded By	...
Witness	...

REMARKS: Surveying taken up at 1167m. Integration from the bottom to 1167m, and from 1167m. to the casing

Velocity (feet per second) =  $\frac{1,000,000}{\text{Interval Transit Time (microseconds per foot)}}$



SPONTANEOUS-POTENTIAL millivolts

INTERVAL TRANSIT TIME microseconds per foot

Spacing 3 Ft. 2 Receivers

GAMMA RAY micrograms Ra-eq/ton

COMPANY \_\_\_\_\_ CTRPSA Rm 5.4 @ 10 # SCHL FR 2159

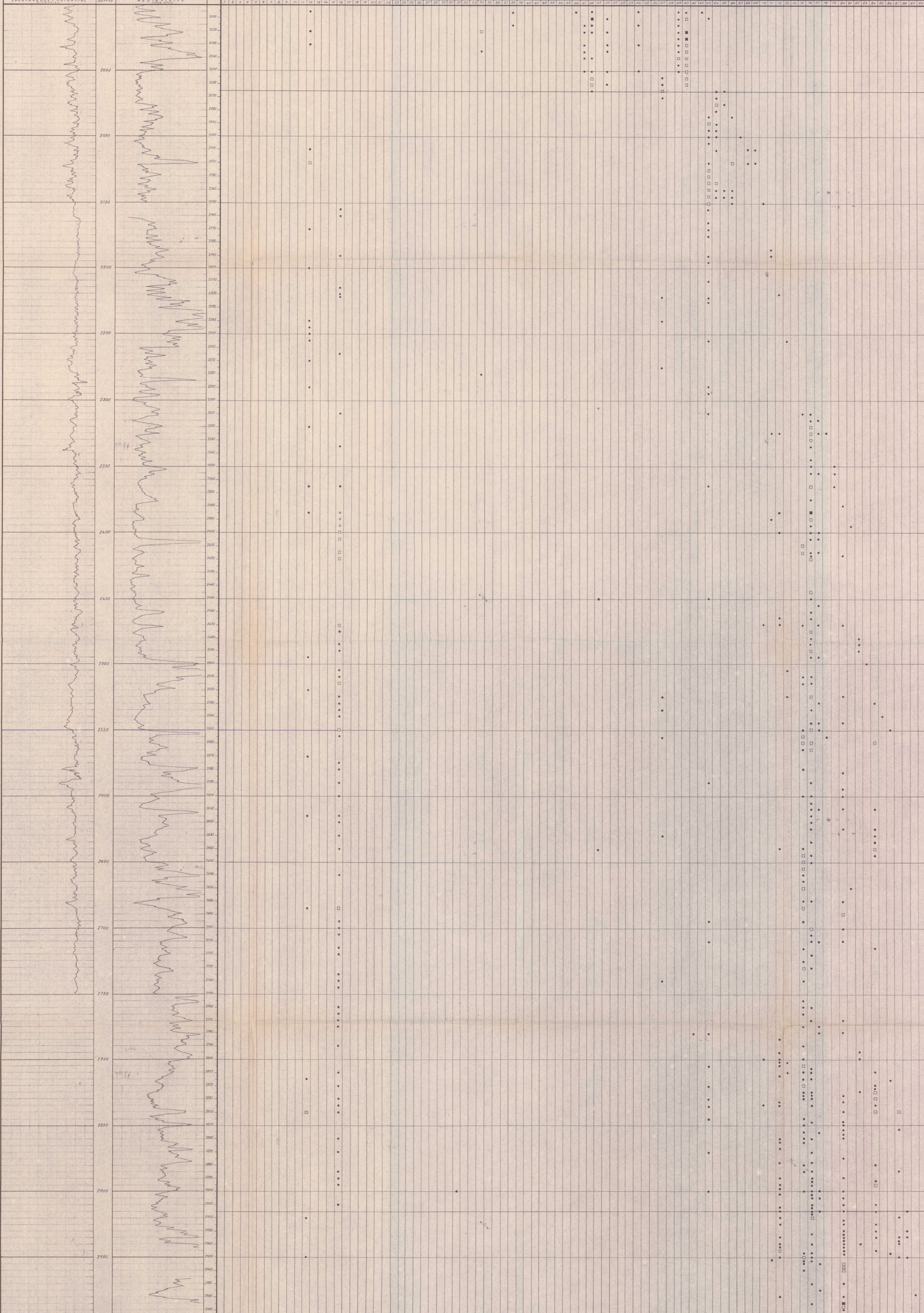
WELL \_\_\_\_\_ CORBERS 1 Rmt. @ # SCHL TD \_\_\_\_\_

FIELD \_\_\_\_\_ SSPAVA LOCATION \_\_\_\_\_ ALAVA BHT 53 # DRLR TD 2161.4

COUNTRY \_\_\_\_\_ STATE \_\_\_\_\_ Elev. KB \_\_\_\_\_  
 DF \_\_\_\_\_  
 CL \_\_\_\_\_



- 1. *Urosalpinx* sp.
- 2. *Urosalpinx* sp.
- 3. *Urosalpinx* sp.
- 4. *Urosalpinx* sp.
- 5. *Urosalpinx* sp.
- 6. *Urosalpinx* sp.
- 7. *Urosalpinx* sp.
- 8. *Urosalpinx* sp.
- 9. *Urosalpinx* sp.
- 10. *Urosalpinx* sp.
- 11. *Urosalpinx* sp.
- 12. *Urosalpinx* sp.
- 13. *Urosalpinx* sp.
- 14. *Urosalpinx* sp.
- 15. *Urosalpinx* sp.
- 16. *Urosalpinx* sp.
- 17. *Urosalpinx* sp.
- 18. *Urosalpinx* sp.
- 19. *Urosalpinx* sp.
- 20. *Urosalpinx* sp.
- 21. *Urosalpinx* sp.
- 22. *Urosalpinx* sp.
- 23. *Urosalpinx* sp.
- 24. *Urosalpinx* sp.
- 25. *Urosalpinx* sp.
- 26. *Urosalpinx* sp.
- 27. *Urosalpinx* sp.
- 28. *Urosalpinx* sp.
- 29. *Urosalpinx* sp.
- 30. *Urosalpinx* sp.
- 31. *Urosalpinx* sp.
- 32. *Urosalpinx* sp.
- 33. *Urosalpinx* sp.
- 34. *Urosalpinx* sp.
- 35. *Urosalpinx* sp.
- 36. *Urosalpinx* sp.
- 37. *Urosalpinx* sp.
- 38. *Urosalpinx* sp.
- 39. *Urosalpinx* sp.
- 40. *Urosalpinx* sp.
- 41. *Urosalpinx* sp.
- 42. *Urosalpinx* sp.
- 43. *Urosalpinx* sp.
- 44. *Urosalpinx* sp.
- 45. *Urosalpinx* sp.
- 46. *Urosalpinx* sp.
- 47. *Urosalpinx* sp.
- 48. *Urosalpinx* sp.
- 49. *Urosalpinx* sp.
- 50. *Urosalpinx* sp.
- 51. *Urosalpinx* sp.
- 52. *Urosalpinx* sp.
- 53. *Urosalpinx* sp.
- 54. *Urosalpinx* sp.
- 55. *Urosalpinx* sp.
- 56. *Urosalpinx* sp.
- 57. *Urosalpinx* sp.
- 58. *Urosalpinx* sp.
- 59. *Urosalpinx* sp.
- 60. *Urosalpinx* sp.
- 61. *Urosalpinx* sp.
- 62. *Urosalpinx* sp.
- 63. *Urosalpinx* sp.
- 64. *Urosalpinx* sp.
- 65. *Urosalpinx* sp.
- 66. *Urosalpinx* sp.
- 67. *Urosalpinx* sp.
- 68. *Urosalpinx* sp.
- 69. *Urosalpinx* sp.
- 70. *Urosalpinx* sp.
- 71. *Urosalpinx* sp.
- 72. *Urosalpinx* sp.
- 73. *Urosalpinx* sp.
- 74. *Urosalpinx* sp.
- 75. *Urosalpinx* sp.
- 76. *Urosalpinx* sp.
- 77. *Urosalpinx* sp.
- 78. *Urosalpinx* sp.
- 79. *Urosalpinx* sp.
- 80. *Urosalpinx* sp.
- 81. *Urosalpinx* sp.
- 82. *Urosalpinx* sp.
- 83. *Urosalpinx* sp.
- 84. *Urosalpinx* sp.
- 85. *Urosalpinx* sp.
- 86. *Urosalpinx* sp.
- 87. *Urosalpinx* sp.
- 88. *Urosalpinx* sp.
- 89. *Urosalpinx* sp.
- 90. *Urosalpinx* sp.
- 91. *Urosalpinx* sp.
- 92. *Urosalpinx* sp.
- 93. *Urosalpinx* sp.
- 94. *Urosalpinx* sp.
- 95. *Urosalpinx* sp.
- 96. *Urosalpinx* sp.
- 97. *Urosalpinx* sp.
- 98. *Urosalpinx* sp.
- 99. *Urosalpinx* sp.
- 100. *Urosalpinx* sp.



*Turonian*

*Cenomanian*

*Lower Cenomanian*

*Lower Cenomanian Albian*

*Albian*

20139





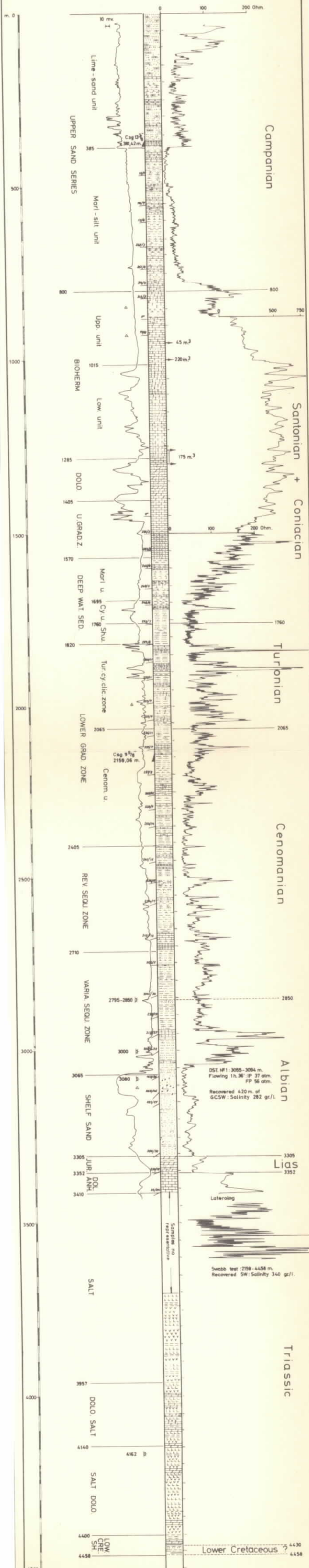


13/9/1960 - 26/4/1961

42° 41' 00" N

1° 13' 25" E

696,30 m. a.s.l.



Total Depth 4458,00 m.

Scale 1:10,000