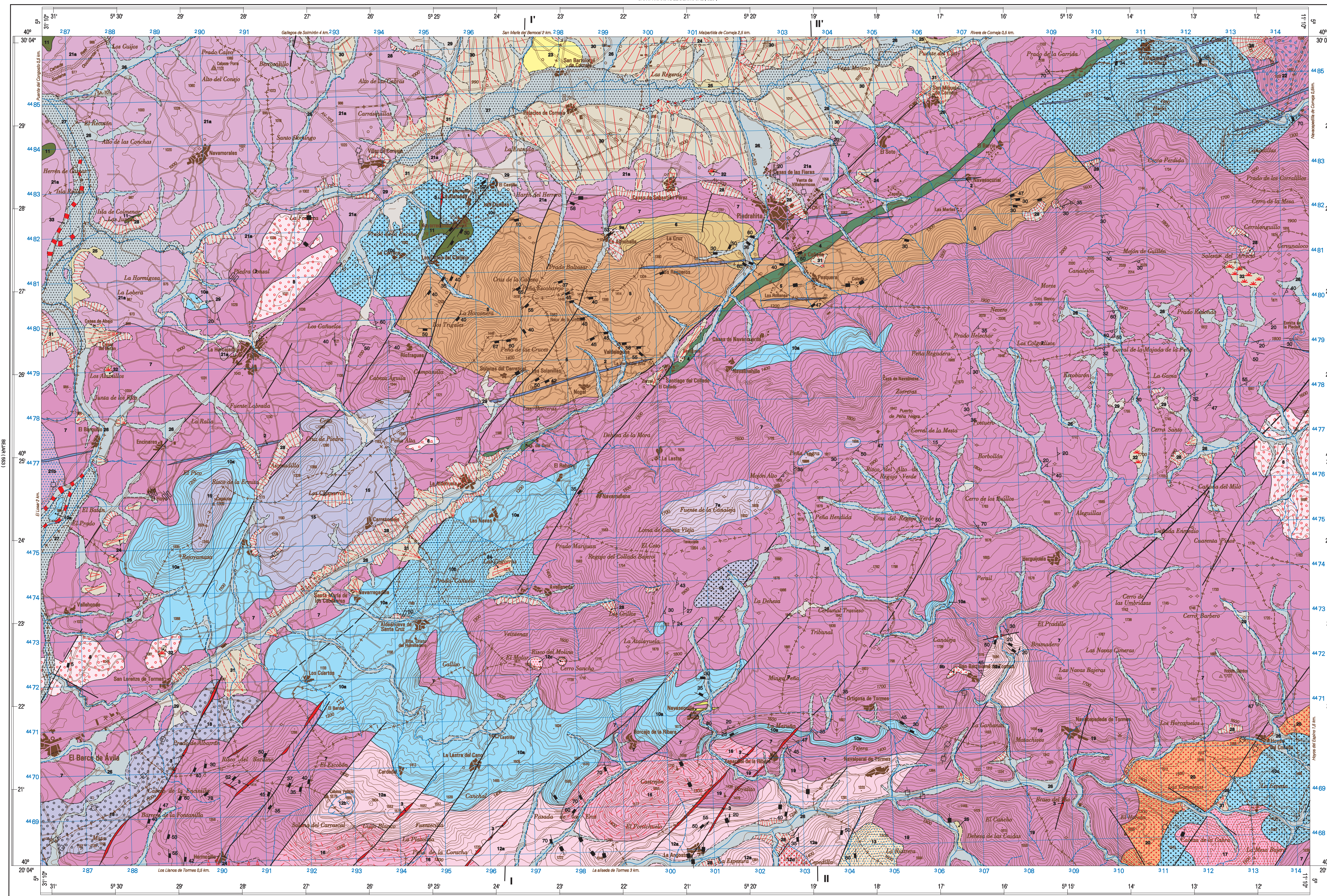
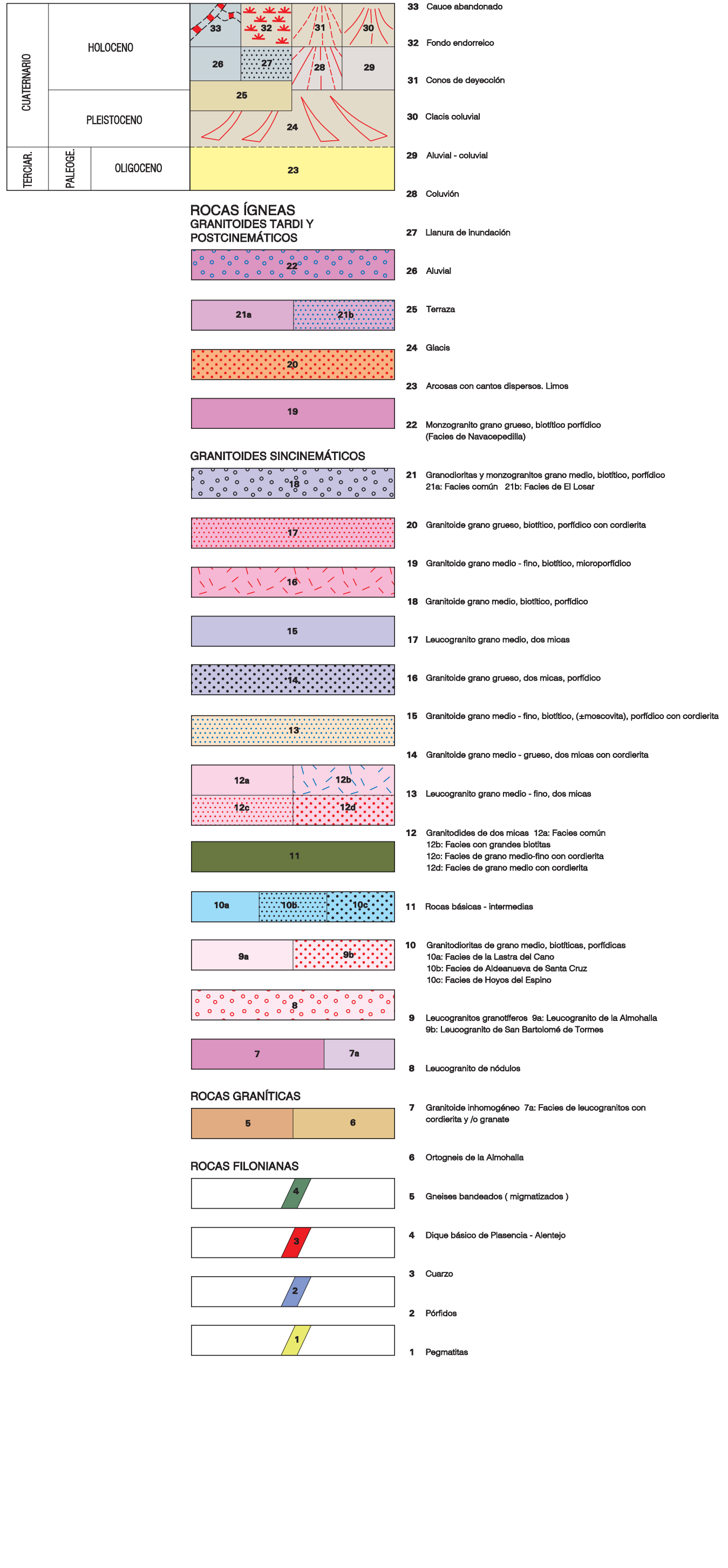
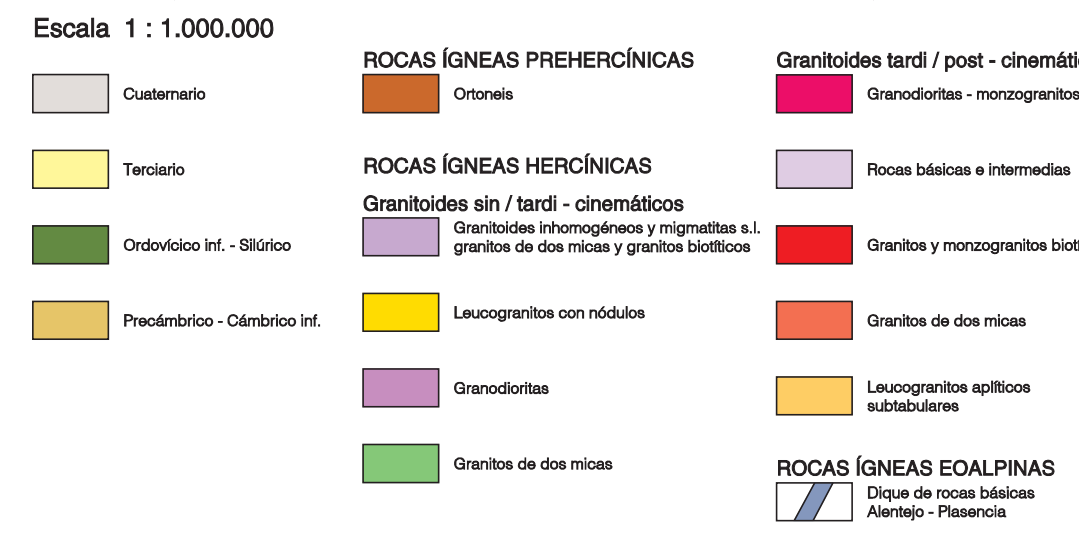
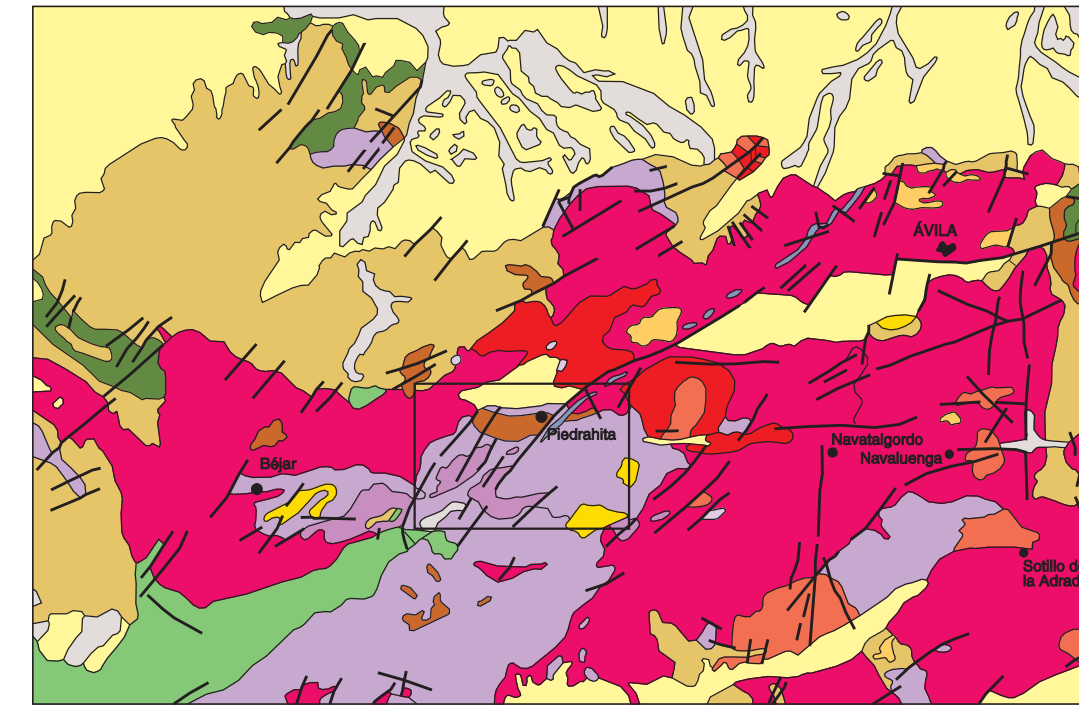


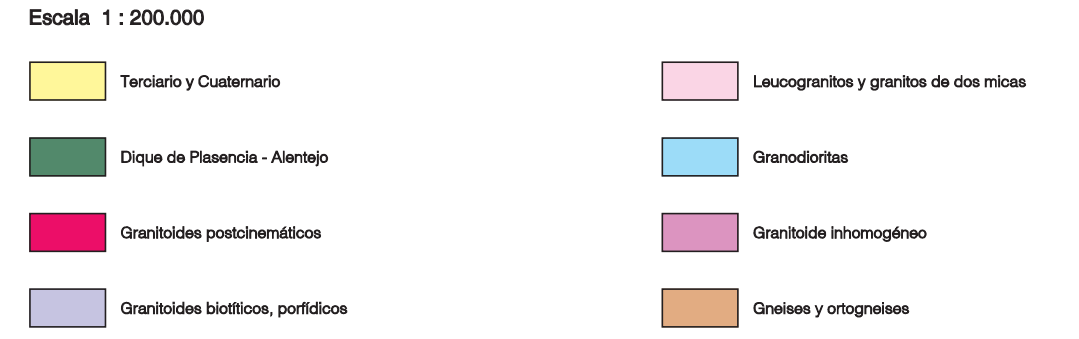
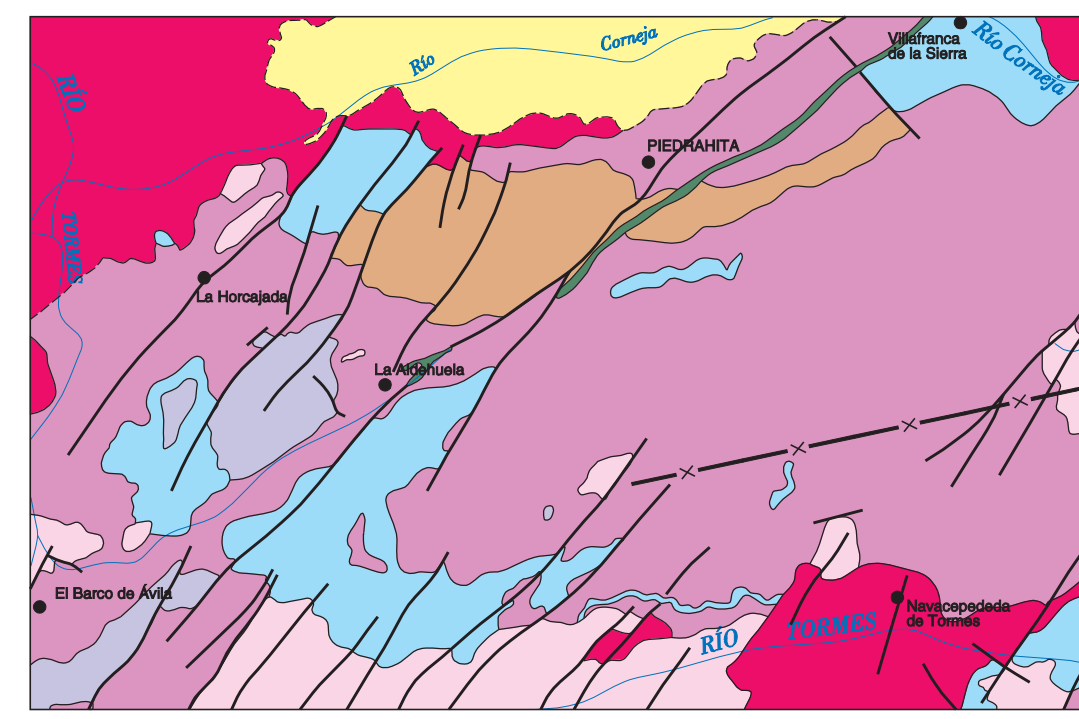
LEYENDA



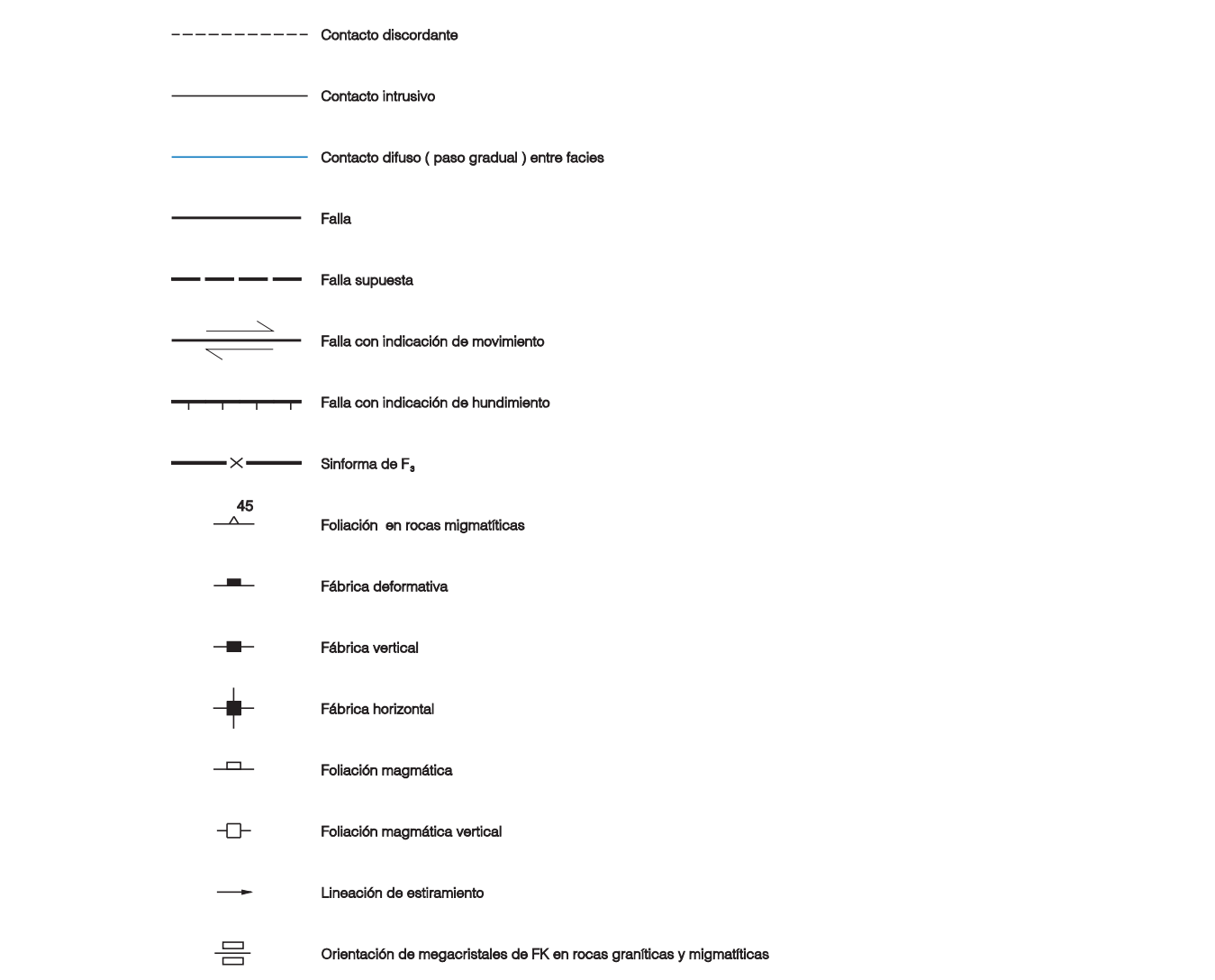
ESQUEMA REGIONAL



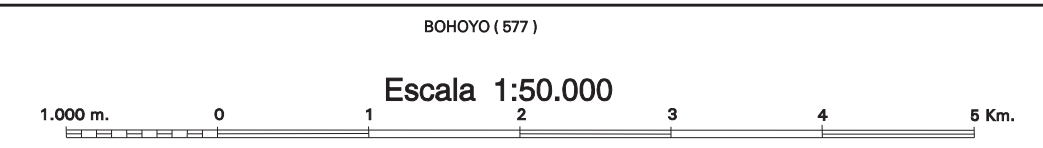
ESQUEMA MORFOESTRUCTURAL



SIGNOS CONVENCIONALES

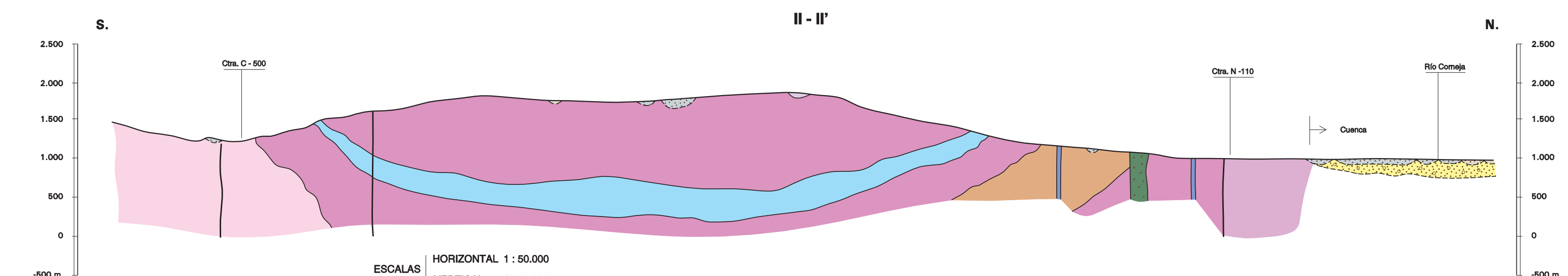
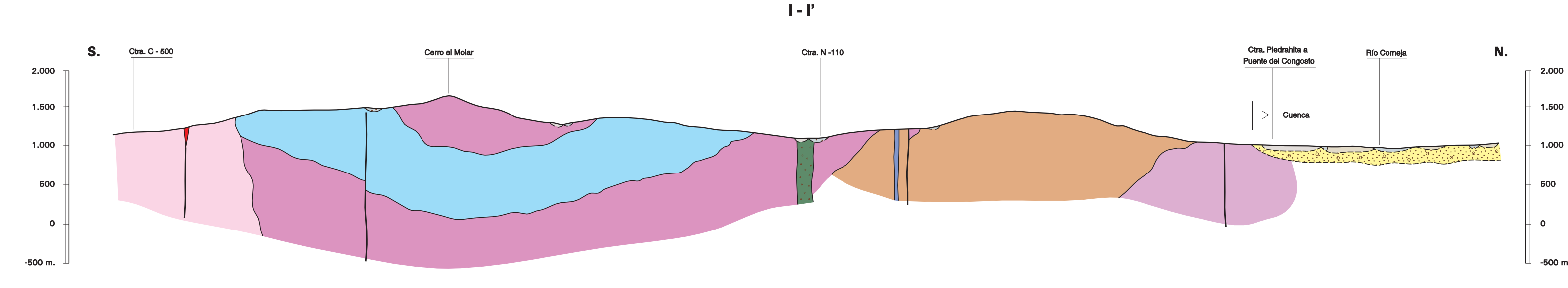


Base Topográfica: CENTRO GEOGRÁFICO DEL ELIÉNTO  
Cartografía: SITES S.A.  
Depósito legal: NPO: ISBN:



NORMAS, DIRECCIÓN Y SUPERVISIÓN DEL IGME  
REALIZACIÓN DE LA CARTOGRAFÍA GEOLÓGICA 1993  
AUTOR: A. Díaz Montes (I.N.A.D.A.R.O.)  
DIRECCIÓN Y SUPERVISIÓN: F. Ballejo Montes (IGME)

CORTES GEOLÓGICOS



ESCALAS HORIZONTAL 1 : 50.000  
VERTICAL 1 : 50.000

ESQUEMA HIDROGEOLÓGICO

