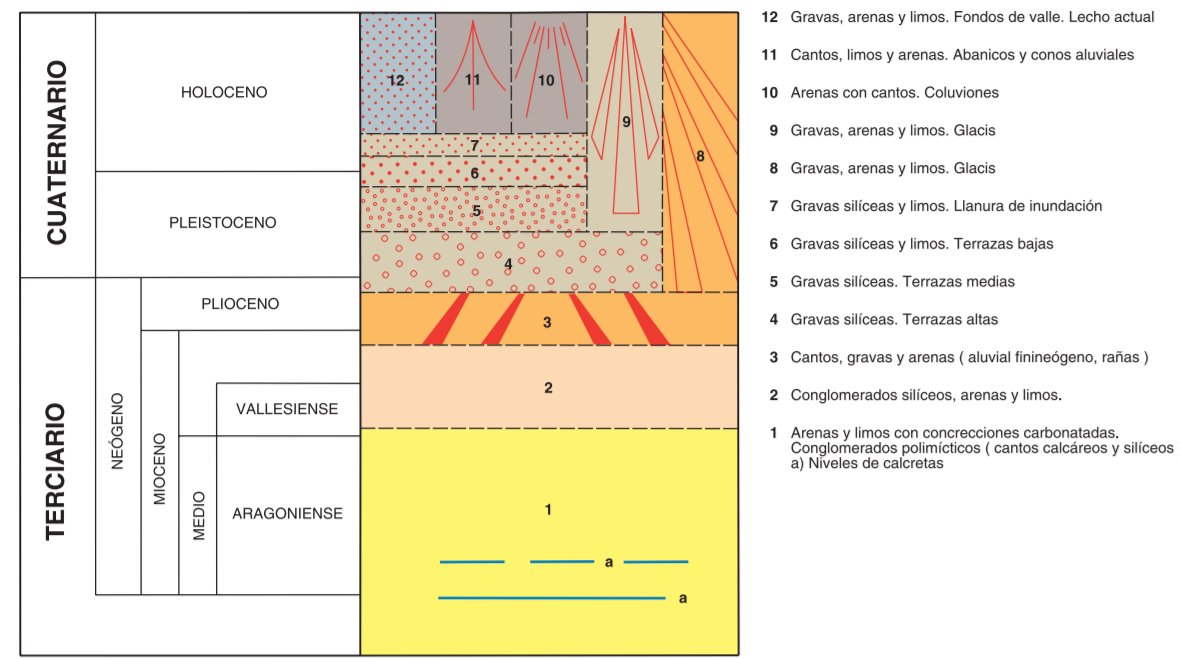


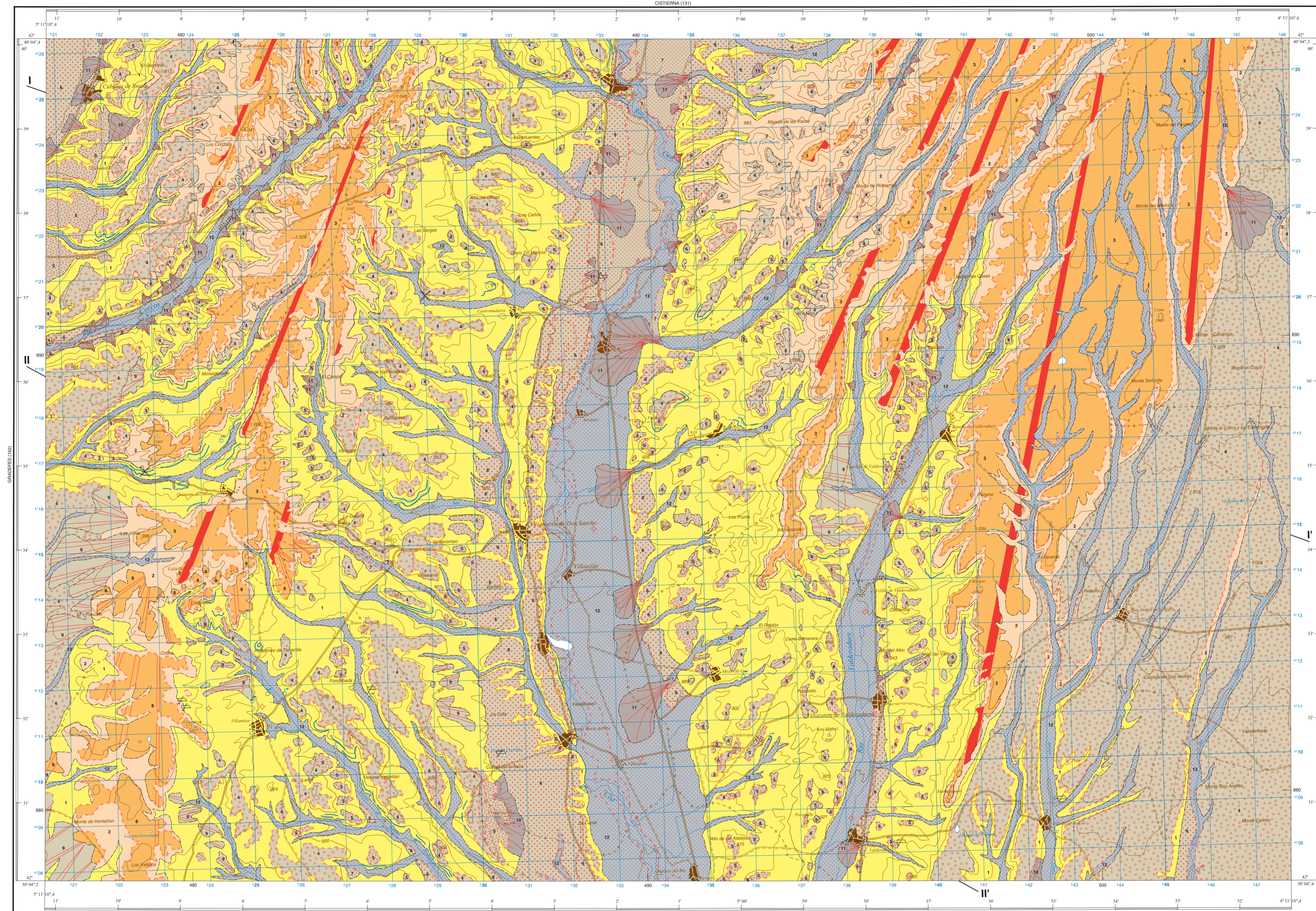
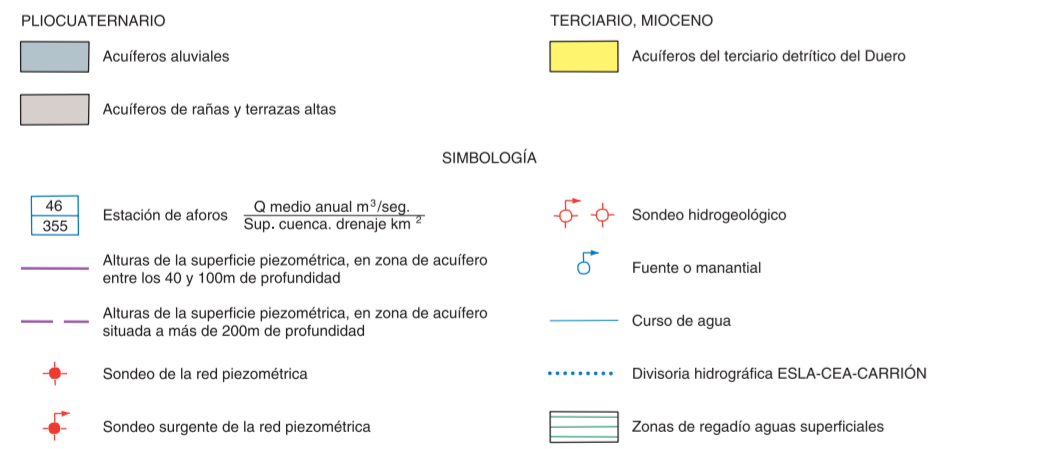
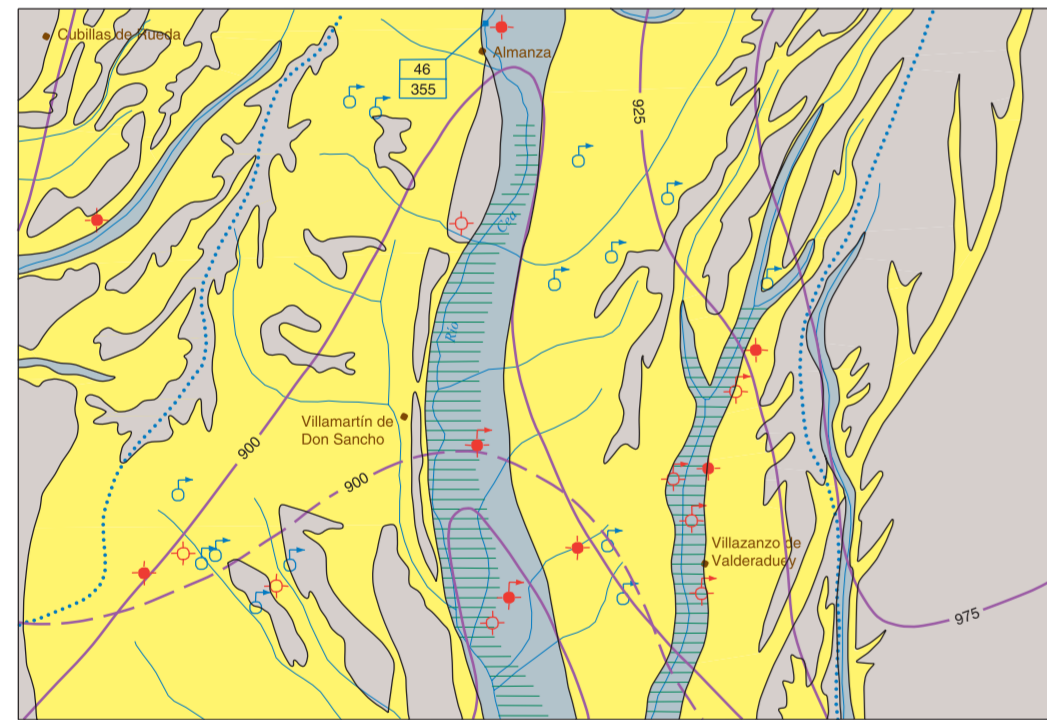
LEYENDA



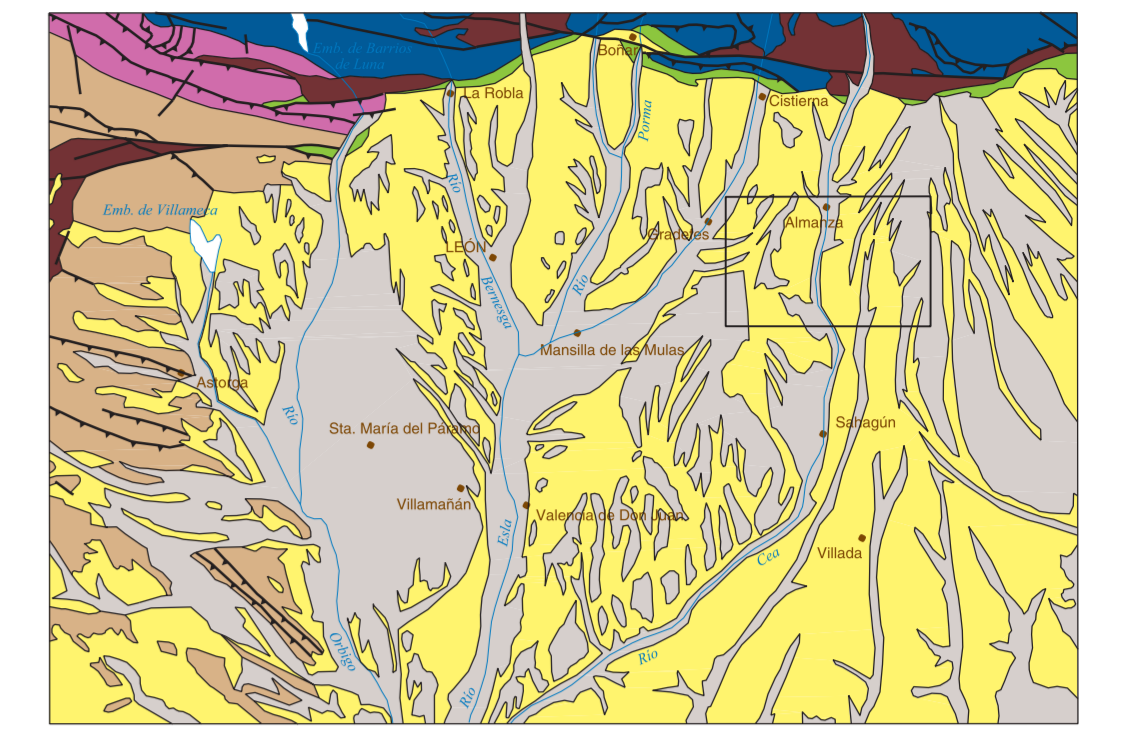
SIGNOS CONVENCIONALES



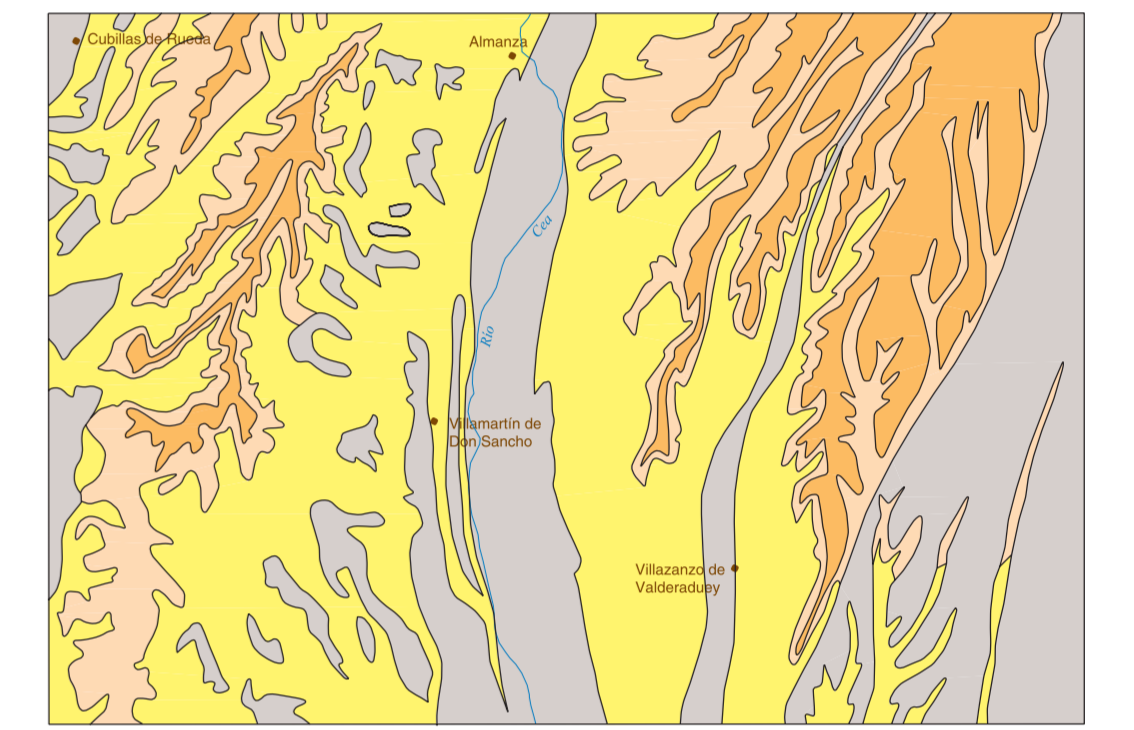
ESQUEMA HIDROGEOLOGICO



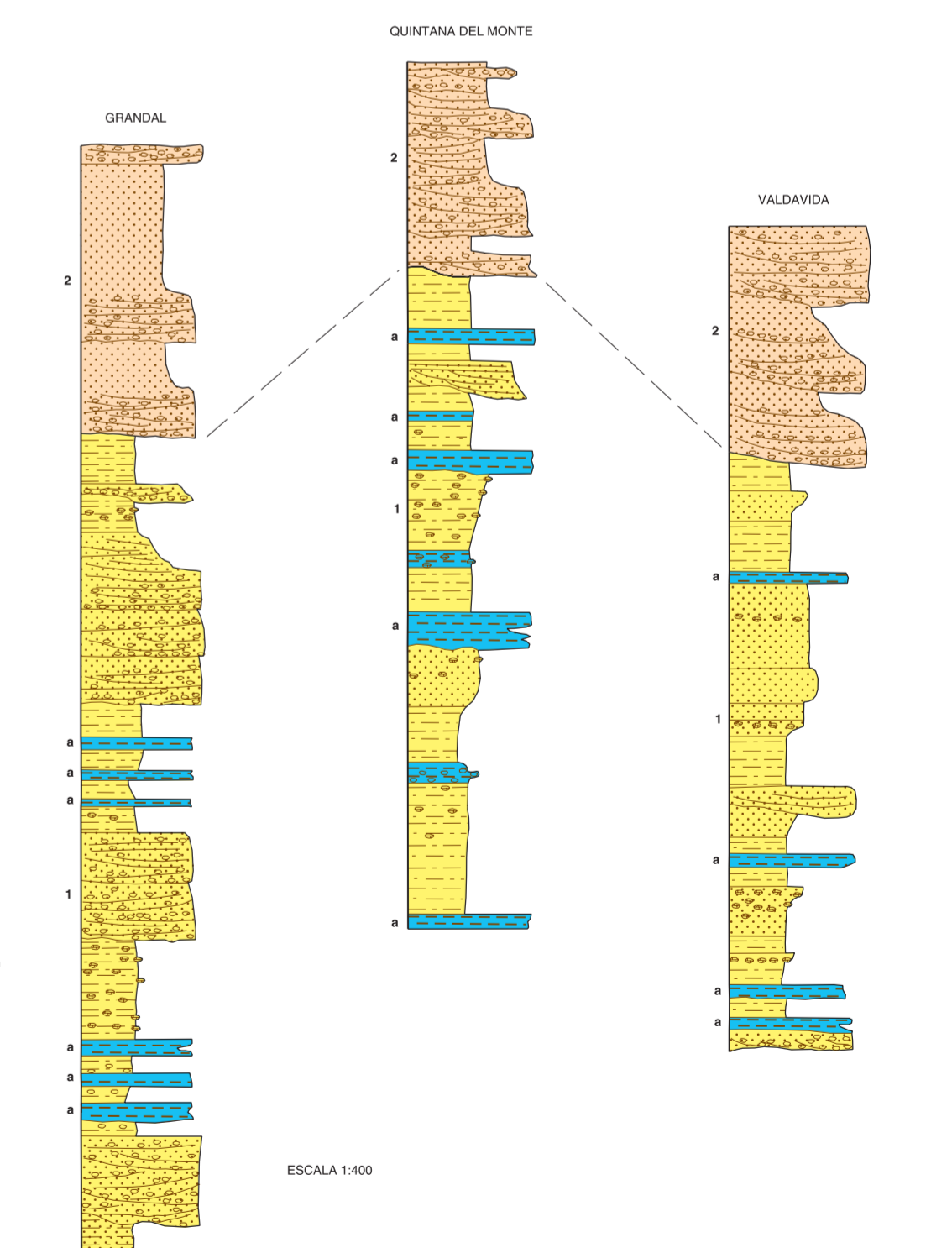
ESQUEMA REGIONAL



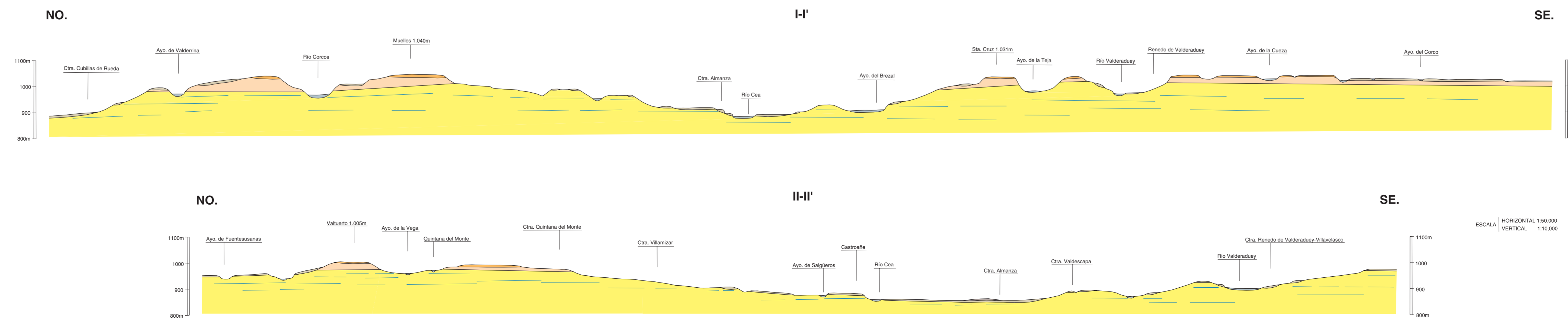
ESQUEMA MORFOTECTÓNICO



COLUMNAS ESTRATIGRÁFICAS EN LAS PRINCIPALES UNIDADES O ZONAS



CORTES GEOLÓGICOS



NORMAS, DIRECCIÓN Y REALIZACIÓN DEL I.G.M.E.  
REALIZACIÓN DE LA CARTOGRAFÍA GEOLÓGICA 1963  
F. Rical Martín  
A. Suárez Rodríguez  
N. Henao Carballo  
L. R. Rodríguez Fernández (I.G.M.E.)